

Recombinant Human KMO protein, 10xHis-tagged

Cat. No. KMO-3142H Lot. No. (See product label)

SPECIFICATION

Product Overview Recombinant Human KMO protein(O15229)(1-486aa), fused with N-terminal 10xHis tag, was expressed in E. coli.

Species Human

Source E.coli

ProteinLength 1-486aa

Tag N-10xHis

Form Tris-based buffer, 50% glycerol

Molecular Mass 61.9 kDa

Purity Greater than 85% as determined by SDS-PAGE.

Storage Store at -20°C/-80°C upon receipt, aliquoting is necessary for mutiple use. Avoid repeated freeze-thaw cycles.

Reconstitution We recommend that this vial be briefly centrifuged prior to opening to bring the contents to the bottom. Please reconstitute protein in deionized sterile water to a concentration of 0.1-1.0 mg/mL. We recommend to add 5-50% of glycerol (final concentration) and aliquot for long-term storage at -20°C/-80°C.

 Tel: 1-631-559-9269 1-516-512-3133

 Email: info@creative-biomart.com  Fax: 1-631-938-8127

 45-1 Ramsey Road, Shirley, NY 11967, USA

AA Sequence

MDSSVIQRKKVAVIGGGLVGS LQACFLAKRNFQIDVYEAREDTRVATFTRGRSINLAL
 SHRGRQALKAVGLEDQIVSQGIPMRARMIHSLSGKKS AIPYGTKSQYILSVSRENLNK
 DLLTAAEKYPNVKMHFNHRL LKCNPEEGMITVLGSDKVPKDVTCDLIVGCDGAYSTV
 RSHLMKKPRFDYSQQYIPHG YMELTIPPKNGDYAMEPNYLHIWPRNTFMMIALPNM
 NKSFTCTLFMPFEEFEKLLT SNDVVDFFQKYFPDAIPLIGEKLLVQDFFLLPAQPMISV
 KCSSFHFKSHCVLLGDAAHA IVPFFGQGMNAGFEDCLVFDELMDKFSNDLSLCLPV
 FSRLRIPDDHAISDL SMYNYIEMRAHVNSSWFIFQKNMERFLHAIM PSTFIPLYTMVTF
 SRIRYHEAVQRWHWQKKV INKGLFFLGSLIAISS TYLLIHYMSPRSFLRLRRPWNWIA
 HFRNTTCFPAKAVDSLEQ ISNLISR

GENE INFORMATION

Gene Name [KMO kynurenine 3-monooxygenase \(kynurenine 3-hydroxylase\) \[Homo sapiens \]](#)

Official Symbol [KMO](#)

Synonyms [KMO](#); kynurenine 3-monooxygenase (kynurenine 3-hydroxylase); kynurenine 3-monooxygenase; kynurenine 3-hydroxylase; dJ317G22.1;

Gene ID [8564](#)

mRNA Refseq [NM_003679](#)

Protein Refseq [NP_003670](#)

MIM [603538](#)

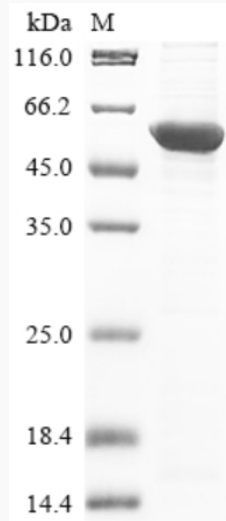
UniProt ID [O15229](#)

 Tel: 1-631-559-9269 1-516-512-3133

 Email: info@creative-biomart.com  Fax: 1-631-938-8127

 45-1 Ramsey Road, Shirley, NY 11967, USA

SDS-PAGE



 Tel: 1-631-559-9269 1-516-512-3133

 Email: info@creative-biomart.com  Fax: 1-631-938-8127

 45-1 Ramsey Road, Shirley, NY 11967, USA