

Recombinant Human KMO Protein, GST-tagged

Cat. No. KMO-4904H Lot. No. (See product label)

SPECIFICATION

Product Overview	Human KMO full-length ORF (AAH05297.1, 1 a.a. - 407 a.a.) recombinant protein with GST-tag at N-terminal.
Species	Human
Source	Wheat Germ
Description	Kynurenine 3-monooxygenase (KMO; EC 1.14.13.9) is an NADPH-dependent flavin monooxygenase that catalyzes the hydroxylation of the L-tryptophan metabolite L-kynurenine to form L-3-hydroxykynurenine.[supplied by OMIM
Molecular Mass	70.51 kDa
AA Sequence	MDSSVIQRKKVAVIGGGLVGS LQACFLAKRNFQIDVYEAREDTRVATFTRGRSINLAL SHRGRQALKAVGLEDQIVSQGIPMRARMIHSLSGKKS AIPYGTKSQYILSVSRENLNK DLLTAAEKYPNVKMHFNHRLKCNPEEGMITVLGSDKVPKDVTC DLIVGCDGAYSTV RSHLMKKPRFDYSQQYIPHYMELTIPPKNGDYAMEPNYLHIWPRNTFMMIALPNM NKSFTCTLFMPFEEFEKLLTSNDVVDFQKYFPDAIPLIGEKLLVQDFFLLPAQPMISV KCSSFHFKSHCVLLGDAAHAIVPFFGQGMNAGFEDCLVFDELMDKFSNDLSLCLPV FSRLRIPDDHAISDL SMYNYIEKNMERFLHAIMPSTFIPLYTMVTF SRIRYHEAVQRW HWQKR
Applications	Enzyme-linked Immunoabsorbent Assay Western Blot (Recombinant protein) Antibody Production

 Tel: 1-631-559-9269 1-516-512-3133

 Email: info@creative-biomart.com  Fax: 1-631-938-8127

 45-1 Ramsey Road, Shirley, NY 11967, USA

Protein Array

Notes	Best use within three months from the date of receipt of this protein.
Storage	Store at -80 centigrade. Aliquot to avoid repeated freezing and thawing.
Storage Buffer	50 mM Tris-HCl, 10 mM reduced Glutathione, pH=8.0 in the elution buffer.

GENE INFORMATION

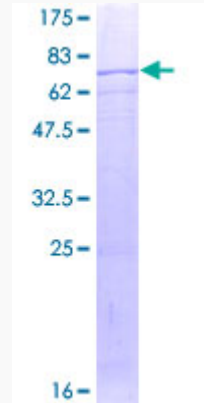
Gene Name	KMO kynurenine 3-monooxygenase (kynurenine 3-hydroxylase) [Homo sapiens]
Official Symbol	KMO
Synonyms	KMO; kynurenine 3-monooxygenase (kynurenine 3-hydroxylase); kynurenine 3-monooxygenase; kynurenine 3-hydroxylase; dJ317G22.1;
Gene ID	8564
mRNA Refseq	NM_003679
Protein Refseq	NP_003670
MIM	603538
UniProt ID	O15229

 Tel: 1-631-559-9269 1-516-512-3133

 Email: info@creative-biomart.com  Fax: 1-631-938-8127

 45-1 Ramsey Road, Shirley, NY 11967, USA

**Quality Control
Testing**



12.5% SDS-PAGE Stained with Coomassie Blue

 Tel: 1-631-559-9269 1-516-512-3133

 Email: info@creative-biomart.com  Fax: 1-631-938-8127

 45-1 Ramsey Road, Shirley, NY 11967, USA