

Active Recombinant Human KMT2A protein, GST-tagged

Cat. No. KMT2A-189H Lot. No. (See product label)

SPECIFICATION

Product Overview	Recombinant Human KMT2A(3738-end) fused with GST tag at N-terminal was expressed in Insect cells.
Species	Human
Source	Insect Cells
ProteinLength	3738-end
Description	Histone-lysine N-methyltransferase 2A also known as mixed-lineage leukemia 1 (MLL1) methylates histone H3 on lysine 4 (H3K4) to promote genome accessibility and transcription. Dysregulation or mutation of the KMT2 family have been found in human cancer, exemplified by the initial discovery of KMT2A rearrangements as causes of MLL.
Form	50mM Tris-HCl, pH 7.5, 150mM NaCl, 10mM glutathione, 0.1mM EDTA, 0.25mM DTT, 0.1mM PMSF, 25% glycerol.
Bio-activity	600 nmol/min/mg
Molecular Mass	52 kDa
Purity	>90%
Applications	Methyltransferase Assay

 Tel: 1-631-559-9269 1-516-512-3133

 Email: info@creative-biomart.com  Fax: 1-631-938-8127

 45-1 Ramsey Road, Shirley, NY 11967, USA

Stability	1 year at -70 centigrade from the date of shipment
Storage	Store product at -70 centigrade. For optimal storage, aliquot target into smaller quantities after centrifugation and store at recommended temperature. For most favorable performance, avoid repeated handling and multiple freeze/thaw cycles.
Concentration	0.1 µg/µl
GENE INFORMATION	
Gene Name	KMT2A lysine methyltransferase 2A [Homo sapiens]
Official Symbol	KMT2A
Synonyms	HRX; MLL; MLL1; TRX1; ALL-1; CXXC7; HTRX1; MLL1A; WDSTS; MLL-AF9; MLL/GAS7; TET1-MLL; CDK6/MLL fusion protein; CXXC-type zinc finger protein 7; MLL-AF4 der(11) fusion protein; MLL/ENL fusion protein; MLL/GAS7 fusion protein; MLL/GMPS fusion protein; MLL/h
Gene ID	4297
mRNA Refseq	NM_005933
Protein Refseq	NP_005924
MIM	159555
UniProt ID	Q03164
Chromosome Location	11q23.3

 Tel: 1-631-559-9269 1-516-512-3133

 Email: info@creative-biomart.com  Fax: 1-631-938-8127

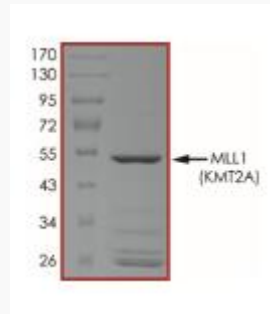
 45-1 Ramsey Road, Shirley, NY 11967, USA

Pathway

Chromatin modifying enzymes, organism-specific biosystem; Histone Modifications, organism-specific biosystem; PKMTs methylate histone lysines, organism-specific biosystem

Function

AT DNA binding; chromatin binding; histone-lysine N-methyltransferase activity



 Tel: 1-631-559-9269 1-516-512-3133

 Email: info@creative-biomart.com  Fax: 1-631-938-8127

 45-1 Ramsey Road, Shirley, NY 11967, USA