

Active Recombinant Human KMT2E protein, GST-tagged

Cat. No. KMT2E-192H Lot. No. (See product label)

SPECIFICATION

Product Overview	Recombinant Human KMT2E(1-548 aa) fused with GST tag at N-terminal was expressed in Insect cells.
Species	Human
Source	Insect Cells
ProteinLength	1-548 aa
Description	Mixed-lineage leukemia protein 5 (MLL5) plays a key regulatory role in hematopoiesis by mediating mono- or demethylation of lysine-4 of histone H3. MLL5 can associate with host cell factor-1 (HCF-1) and be recruited to E2F1-responsive promoters, and thus promotes cell cycle progression. Isoform NKp44L acts as cellular ligand for a natural cytotoxicity receptor, which is critical for NK cell-mediated innate immunity.
Form	50mM Tris-HCl, pH 7.5, 150mM NaCl, 10mM glutathione, 0.1mM EDTA, 0.25mM DTT, 0.1mM PMSF, 25% glycerol.
Bio-activity	250 nmol/min/mg
Molecular Mass	100 kDa
Purity	>90%
Applications	Methyltransferase Assay

 Tel: 1-631-559-9269 1-516-512-3133

 Email: info@creative-biomart.com  Fax: 1-631-938-8127

 45-1 Ramsey Road, Shirley, NY 11967, USA

Stability	1 year at -70 centigrade from the date of shipment
Storage	Store product at -70 centigrade. For optimal storage, aliquot target into smaller quantities after centrifugation and store at recommended temperature. For most favorable performance, avoid repeated handling and multiple freeze/thaw cycles.
Concentration	0.1 µg/µl
GENE INFORMATION	
Gene Name	KMT2E lysine methyltransferase 2E [Homo sapiens]
Official Symbol	KMT2E
Synonyms	MLL5; NKp44L; HDCMC04P; histone-lysine N-methyltransferase MLL5; lysine (K)-specific methyltransferase 2E; myeloid/lymphoid or mixed-lineage leukemia 5 (trithorax homolog, Drosophila); myeloid/lymphoid or mixed-lineage leukemia protein 5
Gene ID	55904
mRNA Refseq	NM_182931
Protein Refseq	NP_891847
UniProt ID	Q8IZD2
Chromosome Location	7q22.3
Pathway	Chromatin modifying enzymes, organism-specific biosystem; Lysine degradation,

 Tel: 1-631-559-9269 1-516-512-3133

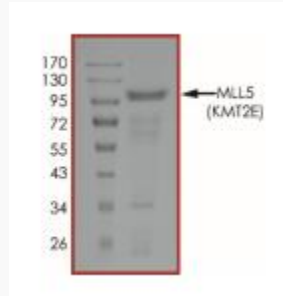
 Email: info@creative-biomart.com  Fax: 1-631-938-8127

 45-1 Ramsey Road, Shirley, NY 11967, USA

organism-specific biosystem; PKMTs methylate histone lysines, organism-specific biosystem

Function

enzyme binding; transcription coactivator activity; zinc ion binding



 Tel: 1-631-559-9269 1-516-512-3133

 Email: info@creative-biomart.com  Fax: 1-631-938-8127

 45-1 Ramsey Road, Shirley, NY 11967, USA