

Recombinant Rat KNG1 Protein (390-639 aa), His-tagged

Cat. No. KNG1-1435R Lot. No. (See product label)

SPECIFICATION

Product Overview	Recombinant Rat KNG1 Protein (390-639 aa) is produced by Yeast expression system. This protein is fused with a 6xHis tag at the N-terminal. Protein Description: Partial.
Species	Rat
Source	Yeast
ProteinLength	390-639 aa
Description	<p>1 Kininogens are inhibitors of thiol proteases; (2) HMW-kininogen plays an important role in blood coagulation by helping to position optimally prekallikrein and factor XI next to factor XII; (3) HMW-kininogen inhibits the thrombin- and plasmin-induced aggregation of thrombocytes; (4) the active peptide bradykinin that is released from HMW-kininogen shows a variety of physiological effects: (4A) influence in smooth muscle contraction, (4B) induction of hypotension, (4C) natriuresis and diuresis, (4D) decrease in blood glucose level, (4E) it is a mediator of inflammation and causes (4E1) increase in vascular permeability, (4E2) stimulation of nociceptors (4E3) release of other mediators of inflammation (e.g. prostaglandins), (4F) it has a cardioprotective effect (directly via bradykinin action, indirectly via endothelium-derived relaxing factor action); (5) LMW-kininogen inhibits the aggregation of thrombocytes; (6) LMW-kininogen is in contrast to HMW-kininogen not involved in blood clotting.</p>

 Tel: 1-631-559-9269 1-516-512-3133

 Email: info@creative-biomart.com  Fax: 1-631-938-8127

 45-1 Ramsey Road, Shirley, NY 11967, USA

Form	Tris-based buffer,50% glycerol
Molecular Mass	29.8 kDa
AA Sequence	APRVKKPKESTTVSPSYIARVQEERDPGNEQGPPIHGHWLHAKQIKNKNHQGHKH GHGIGHGHQKPHGLGHGHQLKLDLQKQREDGYDHRHPVGHGHGQRHGHGHGH GHGRDKHTNKDKNNVKHTDQRRAPLTSSSEDNTTSTQIQGRTEGFTLNPPPLAQP AVISRGFQDSGFTEGVIATTSPYDTETHDDLIPDIHVQPDSLSFKLISDFPEATSHKCPGR PWKPVSRKDPTIETTEFSDFDLLDALS
Purity	> 90% as determined by SDS-PAGE.
Notes	Repeated freezing and thawing is not recommended. Store working aliquots at 4 centigrade for up to one week.
Storage	The shelf life is related to many factors, storage state, buffer ingredients, storage temperature and the stability of the protein itself. Generally, the shelf life of liquid form is 6 months at -20 centigrade/-80 centigrade. The shelf life of lyophilized form is 12 months at -20 centigrade/-80 centigrade.
Concentration	A hardcopy of COA with reconstitution instruction is sent along with the products.

GENE INFORMATION

Gene Name	<i>Kng1</i> kininogen 1 [<i>Rattus norvegicus</i>]
Official Symbol	KNG1
Synonyms	KNG1; kininogen 1; Kng; Tkg; Kngk; Kngt; Map1; TKG6; KINKG; KINKH; Kngt1; KINT1G; Kng_v1; Kng1_v1; MGC93589;

 Tel: 1-631-559-9269 1-516-512-3133

 Email: info@creative-biomart.com  Fax: 1-631-938-8127

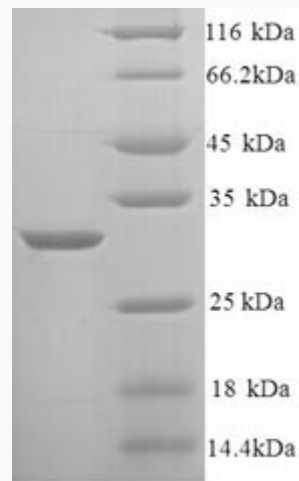
 45-1 Ramsey Road, Shirley, NY 11967, USA

Gene ID 24903

mRNA Refseq NM_012696

Protein Refseq NP_036828

UniProt ID P08934



(Tris-Glycine gel) Discontinuous SDS-PAGE (reduced) with 5% enrichment gel and 15% separation gel.

Tel: 1-631-559-9269 1-516-512-3133

Email: info@creative-biomart.com Fax: 1-631-938-8127

45-1 Ramsey Road, Shirley, NY 11967, USA