

Active Recombinant Human KNG1 protein, His-tagged

Cat. No. KNG1-3179H Lot. No. (See product label)

SPECIFICATION

Product Overview	Active Recombinant Human KNG1 protein(NP_001095886.1) (Gln 19-Ser 644) was expressed in HEK293, fused with a polyhistidine tag at the C-terminus, and a signal peptide at the N-terminus.
Species	Human
Source	HEK293
ProteinLength	19-644 aa
Form	Lyophilized from sterile 25mM Tris, 100mM NaCl, pH 7.5.
Bio-activity	Measured by its ability to inhibit papain cleavage of a fluorogenic peptide substrate Z-FR-AMC. The IC50 value is < 7 nM.
Molecular Mass	The recombinant human KNG1 consists of 637 amino acids and has a predicted molecular mass of 71.3 kDa. As a result of glycosylation, the apparent molecular mass of rhKNG1 is approximately 100-110 kDa in SDS-PAGE under reducing conditions.
Endotoxin	< 1.0 EU per µg protein as determined by the LAL method.
Purity	> 85 % as determined by SDS-PAGE
Storage	Store it under sterile conditions at -20°C to -80°C upon receiving. Recommend to

 Tel: 1-631-559-9269 1-516-512-3133

 Email: info@creative-biomart.com  Fax: 1-631-938-8127

 45-1 Ramsey Road, Shirley, NY 11967, USA

aliquot the protein into smaller quantities for optimal storage. Avoid repeated freeze-thaw cycles.

Reconstitution

It is recommended that sterile water be added to the vial to prepare a stock solution of 0.2 ug/ul. Centrifuge the vial at 4°C before opening to recover the entire contents.

GENE INFORMATION

Gene Name [KNG1 kininogen 1 \[Homo sapiens \]](#)

Official Symbol [KNG1](#)

Synonyms

KNG1; kininogen 1; BDK, kininogen , KNG; kininogen-1; alpha 2 thiol proteinase inhibitor; bradykinin; HMWK; fitzgerald factor; high molecular weight kininogen; alpha-2-thiol proteinase inhibitor; williams-Fitzgerald-Flaujeac factor; BDK; KNG;

Gene ID [3827](#)

mRNA Refseq [NM_000893](#)

Protein Refseq [NP_000884](#)

MIM [612358](#)

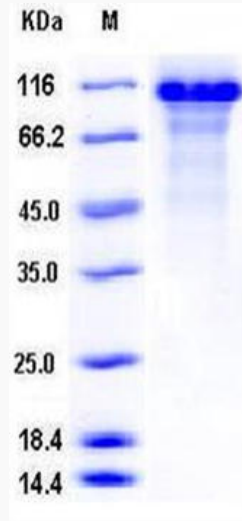
UniProt ID [P01042](#)

 Tel: 1-631-559-9269 1-516-512-3133

 Email: info@creative-biomart.com  Fax: 1-631-938-8127

 45-1 Ramsey Road, Shirley, NY 11967, USA

SDS-PAGE



 Tel: 1-631-559-9269 1-516-512-3133

 Email: info@creative-biomart.com  Fax: 1-631-938-8127

 45-1 Ramsey Road, Shirley, NY 11967, USA