

Recombinant Human KNG1 (LMW) protein, His-tagged

Cat. No. KNG1-375H Lot. No. (See product label)

SPECIFICATION

Product Overview Recombinant Human KNG1 protein (Gln19-Ser427), fused to His tag at C-terminus, was expressed in human 293 cells (HEK293).

Species Human

Source HEK293

ProteinLength 409

Description Kininogen-1 (KNG1) is also known as HMWK, BDK, KNG, is a secreted protein which contains three cystatin domains. KNG1 can be cleaved into the following six chains: Kininogen-1 heavy chain, T-kinin, Bradykinin, Lysyl-bradykinin, Kininogen-1 light chain, Low molecular weight growth-promoting factor. HMW-kininogen plays an important role in blood coagulation by helping to position optimally prekallikrein and factor XI next to factor XII; HMW-kininogen inhibits the thrombin- and plasmin-induced aggregation of thrombocytes. LMW-kininogen inhibits the aggregation of thrombocytes; LMW-kininogen is in contrast to HMW-kininogen not involved in blood clotting.

Form Lyophilized from 0.22 um filtered solution in 50 mM Tris, 150 mM NaCl, pH7.5, 10% trehalose.

Molecular Mass The protein has a calculated MW of 46.6 kDa. The protein migrates as 50-68 kDa under reducing (R) condition (SDS-PAGE) due to glycosylation.

 Tel: 1-631-559-9269 1-516-512-3133

 Email: info@creative-biomart.com  Fax: 1-631-938-8127

 45-1 Ramsey Road, Shirley, NY 11967, USA

Endotoxin	Less than 1.0 EU per ug by the LAL method.
Purity	>92% as determined by SDS-PAGE.
Storage	<p>For long term storage, the product should be stored at lyophilized state at -20 centigrade or lower.</p> <p>Please avoid repeated freeze-thaw cycles.</p> <p>This product is stable after storage at:</p> <p>-20 centigrade to -70 centigrade for 12 months in lyophilized state; -70 centigrade for 3 months under sterile conditions after reconstitution.</p>
Reconstitution	It is recommended that sterile water be added to the vial to prepare a stock solution of 0.2 ug/ul. Centrifuge the vial at 4°C before opening to recover the entire contents.

GENE INFORMATION

Gene Name	KNG1
Official Symbol	KNG1
Synonyms	KNG1; kininogen 1; BDK, kininogen , KNG; kininogen-1; alpha 2 thiol proteinase inhibitor; bradykinin; HMWK; fitzgerald factor; high molecular weight kininogen; alpha-2-thiol proteinase inhibitor; williams-Fitzgerald-Flaujeac factor; BDK; KNG
Gene ID	3827
mRNA Refseq	NM_000893
Protein Refseq	NP_000884
MIM	612358

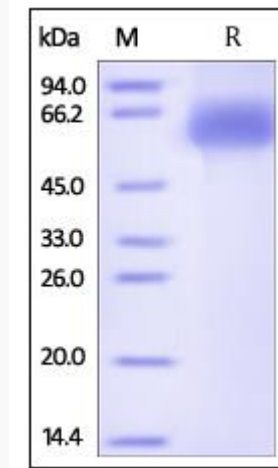
 Tel: 1-631-559-9269 1-516-512-3133

 Email: info@creative-biomart.com  Fax: 1-631-938-8127

 45-1 Ramsey Road, Shirley, NY 11967, USA

UniProt ID

P01042

SDS-PAGE of KNG1-375H

Human Kininogen 1, His Tag on SDS-PAGE under reducing (R) condition. The gel was stained overnight with Coomassie Blue. The purity of the protein is greater than 92%.

 Tel: 1-631-559-9269 1-516-512-3133

 Email: info@creative-biomart.com  Fax: 1-631-938-8127

 45-1 Ramsey Road, Shirley, NY 11967, USA