

Recombinant Human KNTC1 Protein, GST-tagged

Cat. No. KNTC1-4900H Lot. No. (See product label)

SPECIFICATION

Product Overview	Human KNTC1 partial ORF (NP_055523, 2100 a.a. - 2209 a.a.) recombinant protein with GST-tag at N-terminal.
Species	Human
Source	Wheat Germ
Description	This gene encodes a protein that is one of many involved in mechanisms to ensure proper chromosome segregation during cell division. Experimental evidence indicated that the encoded protein functioned in a similar manner to that of the Drosophila rough deal protein. [provided by RefSeq
Molecular Mass	37.84 kDa
AA Sequence	DPQVILKQLEEHMNTGQLAGFSHQIRSLILNNIINKKEFGILAKTKYFQMLKMHAMNT NNITELVNYLANDLSLDEASVLITEYSKHCGKPVPPDTAPCEILKMFLSGLS
Applications	Enzyme-linked Immunoabsorbent Assay Western Blot (Recombinant protein) Antibody Production Protein Array
Notes	Best use within three months from the date of receipt of this protein.
Storage	Store at -80 centigrade. Aliquot to avoid repeated freezing and thawing.

 Tel: 1-631-559-9269 1-516-512-3133

 Email: info@creative-biomart.com  Fax: 1-631-938-8127

 45-1 Ramsey Road, Shirley, NY 11967, USA

Storage Buffer 50 mM Tris-HCl, 10 mM reduced Glutathione, pH=8.0 in the elution buffer.

GENE INFORMATION

Gene Name [KNTC1 kinetochore associated 1 \[Homo sapiens \]](#)

Official Symbol [KNTC1](#)

Synonyms KNTC1; kinetochore associated 1; kinetochore-associated protein 1; KIAA0166; ROD; rough deal homolog (Drosophila); Rough Deal homolog, centromere/kinetochore protein; FLJ36151;

Gene ID [9735](#)

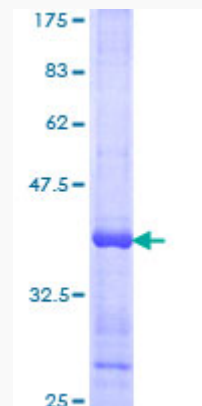
mRNA Refseq [NM_014708](#)

Protein Refseq [NP_055523](#)

MIM [607363](#)

UniProt ID [P50748](#)

Quality Control Testing



 Tel: 1-631-559-9269 1-516-512-3133

 Email: info@creative-biomart.com  Fax: 1-631-938-8127

 45-1 Ramsey Road, Shirley, NY 11967, USA



12.5% SDS-PAGE Stained with Coomassie Blue

 Tel: 1-631-559-9269 1-516-512-3133

 Email: info@creative-biomart.com  Fax: 1-631-938-8127

 45-1 Ramsey Road, Shirley, NY 11967, USA