

Recombinant Full Length Human KPNA1 Protein, C-Flag-tagged

Cat. No. KPNA1-1481HFL **Lot. No.** (See product label)

SPECIFICATION

Product Overview	Recombinant Full Length Human KPNA1 Protein, fused to Flag-tag at C-terminus, was expressed in Mammalian cells.
Species	Human
Source	Mammalian Cells
Description	The transport of molecules between the nucleus and the cytoplasm in eukaryotic cells is mediated by the nuclear pore complex (NPC), which consists of 60-100 proteins. Small molecules (up to 70 kD) can pass through the nuclear pore by nonselective diffusion while larger molecules are transported by an active process. The protein encoded by this gene belongs to the importin alpha family, and is involved in nuclear protein import. This protein interacts with the recombination activating gene 1 (RAG1) protein and is a putative substrate of the RAG1 ubiquitin ligase. Alternative splicing results in multiple transcript variants.
Form	25 mM Tris HCl, pH 7.3, 100 mM glycine, 10% glycerol.
Molecular Mass	60 kDa
AA Sequence	MTTPGKENFRLKSYKNKSLNPDEMRRRREEEGLQLRKQKREEQLFKRRNVATAEE ETEEEVMSDGGFHEA QINNMEMAPGGVITSDMIEMIFSKSPEQQLSATQKFRKLLS KEPNPPIDEVISTPGVVARFVEFLKRKEN CTLQFESAWVLTNIASGNSLQTRIVIQAG AVPIFIELLSSEFEDVQEQAVWALGNIAGDSTMYRDYVLDCLILPPLLQLFSKQNRLLT

 Tel: 1-631-559-9269 1-516-512-3133

 Email: info@creative-biomart.com  Fax: 1-631-938-8127

 45-1 Ramsey Road, Shirley, NY 11967, USA

MTRNAVWALSNLCRGKSPPEFAKVSPCLNVLSWLLFVSDTDVLADACWALSY LS
 DGPNDKIQAVIDAGVCRRLVELLMHNDYKVVSPALRAVGNIVTGDDIQTQVILNCSAL
 QSLHLLSSP KESIKKEACWTISNITAGNRAQIQTVIDANIFPALISILQTAEFRTRKEA
 AWAITNATSGGSAEQIKYLV ELGCIKPLCDLLTVMDSKIVQVALNGLLENILRLGEQEA
 KRNGTGINPYCALIEEAYGLDKIEFLQSHENQ
 EIYQKAFDLIEHYFGTEDEDSSIAPQVDLNQQQYIFQQCEAPMEGFQLTRTRPLEQK
 LISEEDLAANDILDYKDDDDKV

Purity	> 80% as determined by SDS-PAGE and Coomassie blue staining.
Stability	Stable for 12 months from the date of receipt of the product under proper storage and handling conditions. Avoid repeated freeze-thaw cycles.
Storage	Store at -80 centigrade.
Concentration	>50 ug/mL as determined by microplate BCA method.
Preparation	Recombinant protein was captured through anti-DDK affinity column followed by conventional chromatography steps.
Full Length	Full L.

GENE INFORMATION

Gene Name	KPNA1 karyopherin subunit alpha 1 [Homo sapiens (human)]
Official Symbol	KPNA1
Synonyms	RCH2; SRP1; IPOA5; NPI-1
Gene ID	3836

 Tel: 1-631-559-9269 1-516-512-3133

 Email: info@creative-biomart.com  Fax: 1-631-938-8127

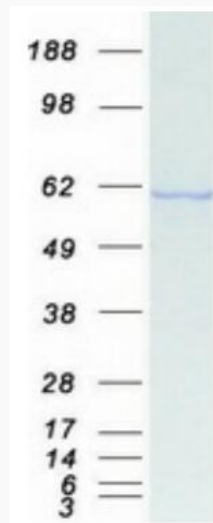
 45-1 Ramsey Road, Shirley, NY 11967, USA

mRNA Refseq [NM_002264.4](#)

Protein Refseq [NP_002255.3](#)

MIM [600686](#)

UniProt ID [P52294](#)



Coomassie blue staining of purified KPNA1 protein.

 Tel: 1-631-559-9269 1-516-512-3133

 Email: info@creative-biomart.com  Fax: 1-631-938-8127

 45-1 Ramsey Road, Shirley, NY 11967, USA