

Recombinant Human KPNA1 Protein (Leu239-Thr506), N-His tagged

Cat. No. KPNA1-4368H Lot. No. (See product label)

SPECIFICATION

Product Overview	Recombinant human KPNA1 (Leu239-Thr506) fused with the N-His tag was expressed in E. coli.
Species	Human
Source	E.coli
ProteinLength	Leu239-Thr506
Form	Lyophilized powder/frozen liquid
Molecular Mass	31.76 kDa
Purity	>90% as determined by SDS-PAGE.
Notes	For research use only.
Storage	Use a manual defrost freezer and avoid repeated freeze thaw cycles. Store at 2 to 8 centigrade for one week. Store at -20 to -80 centigrade for twelve months from the date of receipt.
Storage Buffer	0.01M PBS, pH 7.4, 0.02% NLS
Reconstitution	Reconstitute in sterile water for a stock solution.

 Tel: 1-631-559-9269 1-516-512-3133

 Email: info@creative-biomart.com  Fax: 1-631-938-8127

 45-1 Ramsey Road, Shirley, NY 11967, USA

Shipping

They are shipped out with dry ice/blue ice unless customers require otherwise.

GENE INFORMATION
Gene Name

KPNA1 karyopherin alpha 1 (importin alpha 5) [Homo sapiens (human)]

Official Symbol

KPNA1

Synonyms

KPNA1; karyopherin alpha 1 (importin alpha 5); importin subunit alpha-1; IPOA5; NPI 1; RCH2; SRP1; SRP1-beta; importin alpha 5; importin-alpha-S1; RAG cohort protein 2; nucleoprotein interactor 1; karyopherin subunit alpha-1; recombination activating gene cohort 2; NPI-1;

Gene ID

3836

mRNA Refseq

NM_002264

Protein Refseq

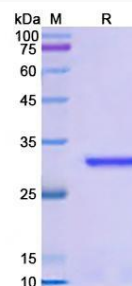
NP_002255

MIM

600686

UniProt ID

P52294

SDS-PAGE


Tel: 1-631-559-9269 1-516-512-3133

Email: info@creative-biomart.com Fax: 1-631-938-8127

45-1 Ramsey Road, Shirley, NY 11967, USA