

Recombinant Human KPNA1 Protein, GST-tagged

Cat. No. KPNA1-4898H Lot. No. (See product label)

SPECIFICATION

Product Overview	Human KPNA1 full-length ORF (AAH02374.1, 1 a.a. - 538 a.a.) recombinant protein with GST-tag at N-terminal.
Species	Human
Source	Wheat Germ
Description	<p>Recombination activating proteins RAG1 and RAG2 regulate and mediate V(D)J recombination, the process by which genes for immunoglobulins and T-cell receptors are generated. Several other ubiquitously expressed proteins are thought to be recruited in the recombination process. Among these are the genes affected in severe combined immune deficiency and genes involved in ds-DNA break repair. The protein encoded by this gene interacts with RAG1 and may play a role in V(D)J recombination. Two transcript variants, one protein-coding and the other not, have been found for this gene. [provided by RefSeq]</p>
Molecular Mass	84.92 kDa
AA Sequence	<p>MTTPGKENFRLKSYKNKSLNPDEMRRRREEEGLQLRKQKREEQLFKRRNVATAEE ETEEEVMSDGGFHEAQINMEMAPGGVITSDMIEMIFSKSPEQQLSATQKFRKLLSK EPNPPIDEVISTPGVVARFVEFLKRKENCTLQFESAWVLTNIASGNSLQTRIVIQAGAV PIFIELLSSEFEDVQEQAVWALGNIAGDSTMCRDYVLDCNILPPLLQLFSKQNRLTMT RNAVWALSNLCRGKSPPEFAKVSPCLNVLSWLLFVSDTDVLADACWALSYSYLSGDP NDKIQAVIDAGVCRRLVELLMHNDYKVVSPALRAVGNIVTGDDIQTQVILNCSALQSL</p>

 Tel: 1-631-559-9269 1-516-512-3133

 Email: info@creative-biomart.com  Fax: 1-631-938-8127

 45-1 Ramsey Road, Shirley, NY 11967, USA

LHLLSSPKESIKKEACWTISNITAGNRAQIQTVIDANIFPALISILQTAEFRTRKEAAWAI
 TNATSGGSAEQIKYLVELGCIKPLCDLLTVMDSKIVQVALNGLLENILRLGEQEAKRNG
 TGINPYCALIEEAYGLDKIEFLQSHENQEIYQKAFDLIEHYFGTEDEDSSIAPQVDLNQ
 QQYIFQQCEAPMEGFQL

Applications	Enzyme-linked Immunoabsorbent Assay Western Blot (Recombinant protein) Antibody Production Protein Array
Notes	Best use within three months from the date of receipt of this protein.
Storage	Store at -80 centigrade. Aliquot to avoid repeated freezing and thawing.
Storage Buffer	50 mM Tris-HCl, 10 mM reduced Glutathione, pH=8.0 in the elution buffer.

GENE INFORMATION

Gene Name	KPNA1 karyopherin alpha 1 (importin alpha 5) [Homo sapiens]
Official Symbol	KPNA1
Synonyms	KPNA1; karyopherin alpha 1 (importin alpha 5); importin subunit alpha-1; IPOA5; NPI 1; RCH2; SRP1; SRP1-beta; importin alpha 5; importin-alpha-S1; RAG cohort protein 2; nucleoprotein interactor 1; karyopherin subunit alpha-1; recombination activating gene cohort 2; NPI-1;
Gene ID	3836
mRNA Refseq	NM_002264

 Tel: 1-631-559-9269 1-516-512-3133

 Email: info@creative-biomart.com  Fax: 1-631-938-8127

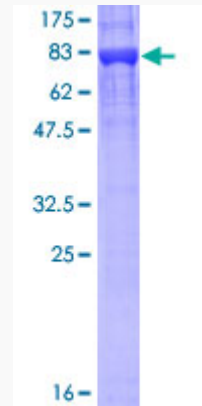
 45-1 Ramsey Road, Shirley, NY 11967, USA

Protein Refseq NP_002255

MIM 600686

UniProt ID P52294

**Quality Control
Testing**



12.5% SDS-PAGE Stained with Coomassie Blue

 Tel: 1-631-559-9269 1-516-512-3133

 Email: info@creative-biomart.com  Fax: 1-631-938-8127

 45-1 Ramsey Road, Shirley, NY 11967, USA