

Recombinant Human KPNA2 Protein (Met1-Phe529), N-His tagged

Cat. No. KPNA2-4370H Lot. No. (See product label)

SPECIFICATION

Product Overview	Recombinant human KPNA2 (Met1-Phe529) fused with the N-terminal His tag was expressed in E. coli.
Species	Human
Source	E.coli
ProteinLength	Met1-Phe529
Form	Lyophilized powder/frozen liquid
Molecular Mass	58.19 kDa
Purity	>90% as determined by SDS-PAGE.
Notes	For research use only.
Storage	Use a manual defrost freezer and avoid repeated freeze thaw cycles. Store at 2 to 8 centigrade for one week. Store at -20 to -80 centigrade for twelve months from the date of receipt.
Storage Buffer	Supplied as solution form in PBS or lyophilized from PBS.
Reconstitution	Reconstitute in sterile water for a stock solution.

 Tel: 1-631-559-9269 1-516-512-3133

 Email: info@creative-biomart.com  Fax: 1-631-938-8127

 45-1 Ramsey Road, Shirley, NY 11967, USA

Shipping They are shipped out with dry ice/blue ice unless customers require otherwise.

GENE INFORMATION

Gene Name KPNA2 karyopherin alpha 2 (RAG cohort 1, importin alpha 1) [Homo sapiens (human)]

Official Symbol KPNA2

Synonyms KPNA2; karyopherin alpha 2 (RAG cohort 1, importin alpha 1); RCH1; importin subunit alpha-2; IPOA1; QIP2; SRP1alpha; pendulin; SRP1-alpha; RAG cohort 1; importin alpha 1; importin alpha 2; importin-alpha-P1; RAG cohort protein 1; karyopherin subunit alpha-2;

Gene ID 3838

mRNA Refseq NM_002266

Protein Refseq NP_002257

MIM 600685

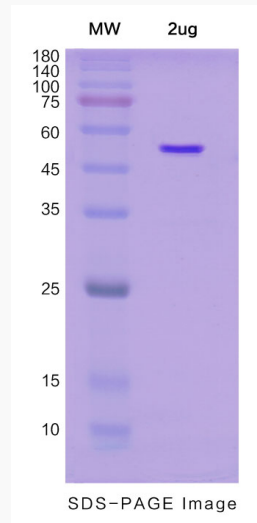
UniProt ID P52292

 Tel: 1-631-559-9269 1-516-512-3133

 Email: info@creative-biomart.com  Fax: 1-631-938-8127

 45-1 Ramsey Road, Shirley, NY 11967, USA

SDS-PAGE



 Tel: 1-631-559-9269 1-516-512-3133

 Email: info@creative-biomart.com  Fax: 1-631-938-8127

 45-1 Ramsey Road, Shirley, NY 11967, USA