

## Recombinant Human KPNA2 Protein, GST-tagged

Cat. No. KPNA2-4897H Lot. No. (See product label)

### SPECIFICATION

<b>Product Overview</b>	Human KPNA2 full-length ORF ( AAH05978.1, 1 a.a. - 529 a.a.) recombinant protein with GST-tag at N-terminal.
<b>Species</b>	Human
<b>Source</b>	Wheat Germ
<b>Description</b>	<p>The import of proteins into the nucleus is a process that involves at least 2 steps. The first is an energy-independent docking of the protein to the nuclear envelope and the second is an energy-dependent translocation through the nuclear pore complex. Imported proteins require a nuclear localization sequence (NLS) which generally consists of a short region of basic amino acids or 2 such regions spaced about 10 amino acids apart. Proteins involved in the first step of nuclear import have been identified in different systems. These include the <i>Xenopus</i> protein importin and its yeast homolog, SRP1 (a suppressor of certain temperature-sensitive mutations of RNA polymerase I in <i>Saccharomyces cerevisiae</i>), which bind to the NLS. KPNA2 protein interacts with the NLSs of DNA helicase Q1 and SV40 T antigen and may be involved in the nuclear transport of proteins. KPNA2 also may play a role in V(D)J recombination [provided by RefSeq]</p>
<b>Molecular Mass</b>	83.93 kDa
<b>AA Sequence</b>	MSTNENANTPAARLHRFKNGKGDSTEMRRRRRIEVNVELRKAKKDDQMLKRRNVSS FPDDATSPLQENRNNQGTVNWSVDDIVKGINSSNVENQLQATQAARKLLSREKQPP

 Tel: 1-631-559-9269 1-516-512-3133

 Email: [info@creative-biomart.com](mailto:info@creative-biomart.com)  Fax: 1-631-938-8127

 45-1 Ramsey Road, Shirley, NY 11967, USA

IDNIIRAGLIPKFVSFLGRTDCSPIQFESAWALTNIASGTSEQTKVVVDGGGAIPAFISLL  
 ASPHAHISEQAVWALGNIAGDGSVFRDLVIKYGAVDPLLALLAVPDMSSLACGYLRN  
 LTWTLSNLCRNKNPAPPIDAVEQILPTLVRLHHDDPEVLADTCWAISYLTGPNERI  
 GMVVKTGVVPQLVKLLGASELPIVTPALRAIGNIVTGTDEQTQVVIDAGALAVFPSLLT  
 NPKTNIQKEATWTMSNITAGRQDQIQVVNHGLVPFLVSVLSKADFKTQKEAVWAV  
 TNYTSGGTVEQIVYLVHCGIIEPLMNLITAKDTKIILVILDAISNIFQAENLGETEKLSIM  
 IECEGGLDKIEALQNHENESVYKASLSLIEKYFSVEEEEDQNVVPETTSEGYTFQVQD  
 GAPGTFNF

**Applications**

Enzyme-linked Immunoabsorbent Assay  
 Western Blot (Recombinant protein)  
 Antibody Production  
 Protein Array

**Notes**

Best use within three months from the date of receipt of this protein.

**Storage**

Store at -80 centigrade. Aliquot to avoid repeated freezing and thawing.

**Storage Buffer**

50 mM Tris-HCl, 10 mM reduced Glutathione, pH=8.0 in the elution buffer.

## GENE INFORMATION

**Gene Name**

KPNA2 karyopherin alpha 2 (RAG cohort 1, importin alpha 1) [ Homo sapiens ]

**Official Symbol**

KPNA2

**Synonyms**

KPNA2; karyopherin alpha 2 (RAG cohort 1, importin alpha 1); RCH1; importin subunit alpha-2; IPOA1; QIP2; SRP1alpha; pendulin; SRP1-alpha; RAG cohort 1; importin alpha 1; importin alpha 2; importin-alpha-P1; RAG cohort protein 1; karyopherin subunit alpha-2;

 Tel: 1-631-559-9269 1-516-512-3133

 Email: [info@creative-biomart.com](mailto:info@creative-biomart.com)  Fax: 1-631-938-8127

 45-1 Ramsey Road, Shirley, NY 11967, USA

Gene ID 3838

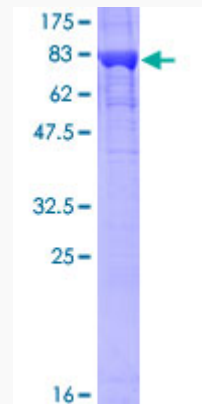
mRNA Refseq NM\_002266

Protein Refseq NP\_002257

MIM 600685

UniProt ID P52292

Quality Control  
Testing



12.5% SDS-PAGE Stained with Coomassie Blue

Tel: 1-631-559-9269 1-516-512-3133

Email: [info@creative-biomart.com](mailto:info@creative-biomart.com) Fax: 1-631-938-8127

45-1 Ramsey Road, Shirley, NY 11967, USA