

Recombinant Human KPNA2 protein, His&Myc-tagged

Cat. No. KPNA2-8854H Lot. No. (See product label)

SPECIFICATION

Product Overview	Recombinant Human KPNA2 protein(P52292)(2-529aa), fused with N-terminal His tag and C-terminal Myc tag, was expressed in E.coli.
Species	Human
Source	E.coli
ProteinLength	2-529a.a.
Tag	His&Myc
Form	If the delivery form is liquid, the default storage buffer is Tris/PBS-based buffer, 5%-50% glycerol. If the delivery form is lyophilized powder, the buffer before lyophilization is Tris/PBS-based buffer, 6% Trehalose, pH 8.0.
Molecular Mass	62.7 kDa
Purity	Greater than 90% as determined by SDS-PAGE.
Storage	Store at -20°C/-80°C upon receipt, aliquoting is necessary for mutiple use. Avoid repeated freeze-thaw cycles.
Reconstitution	We recommend that this vial be briefly centrifuged prior to opening to bring the contents to the bottom. Please reconstitute protein in deionized sterile water to a concentration of 0.1-1.0 mg/mL.We recommend to add 5-50% of glycerol (final

 Tel: 1-631-559-9269 1-516-512-3133

 Email: info@creative-biomart.com  Fax: 1-631-938-8127

 45-1 Ramsey Road, Shirley, NY 11967, USA

concentration) and aliquot for long-term storage at -20°C/-80°C.

AA Sequence

STNENANTPAARLHRFKNKGKDSTEMRRRRRIEVNVELRKAKKDDQMLKRRNVSSFP
 DDATSPLQENRNNQGTVNWSVDDIVKGINSSNVENQLQATQAARKLLSREKQPPID
 NIIRAGLIPKFVSFLGRTDCSPIQFESAWALTNIASGTSEQTKAVVDGGAIPAFISLLAS
 PHAHISEQAVWALGNIAGDGSVFRDLVIKYGAVDPLLALLAVPDMSSLACGYLRNLT
 WTLSNLCRNKNPAPPIDAVEQILPTLVRLHHDDPEVLADTCWAI SYLTDGPNERIGM
 VVKTGVVPQLVKLLGASELPIVTPALRAIGNIVTGTDEQTQVVIDAGALAVFPSLLTNP
 KTNIQKEATWTMSNITAGRQDQIQVVNHGLVPFLVSVLSKADFKTQKEAVWAVTN
 YTSGGTVEQIVYLVHCGIIEPLMNLALTAKDTKIILVILDAISNIFQAAEKLGETEKLSIMIE
 ECGGLDKIEALQNHENESVYKASLSLIEKYFSVEEEEDQNVVPETTSEG YTFQVQDG
 APGTFNF

GENE INFORMATION

Gene Name [KPNA2 karyopherin alpha 2 \(RAG cohort 1, importin alpha 1\) \[Homo sapiens \]](#)

Official Symbol [KPNA2](#)

Synonyms [KPNA2](#); karyopherin alpha 2 (RAG cohort 1, importin alpha 1); RCH1; importin subunit alpha-2; IPOA1; QIP2; SRP1alpha; pendulin; SRP1-alpha; RAG cohort 1; importin alpha 1; importin alpha 2; importin-alpha-P1; RAG cohort protein 1; karyopherin subunit alpha-2;

Gene ID [3838](#)

mRNA Refseq [NM_002266](#)

Protein Refseq [NP_002257](#)

MIM [600685](#)

 Tel: 1-631-559-9269 1-516-512-3133

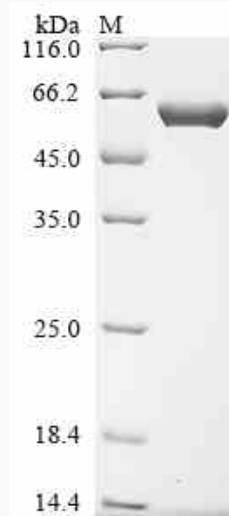
 Email: info@creative-biomart.com  Fax: 1-631-938-8127

 45-1 Ramsey Road, Shirley, NY 11967, USA

UniProt ID

P52292

SDS-PAGE



 Tel: 1-631-559-9269 1-516-512-3133

 Email: info@creative-biomart.com  Fax: 1-631-938-8127

 45-1 Ramsey Road, Shirley, NY 11967, USA