

Recombinant Human KPNA2 protein, His-tagged

Cat. No. KPNA2-9672H Lot. No. (See product label)

SPECIFICATION

Product Overview	Recombinant Human KPNA2 protein(P52292)(544aa), fused with N-terminal His tag, was expressed in E. coli.
Species	Human
Source	E.coli
Protein Length	544aa(including fusion tag)
Tag	N-His
Form	20mM Tris.Cl, 50mM NaCl, 50% Glycerol, pH8.0.
Molecular Mass	59.8kDa(including fusion tag)
Storage	Store at -80°C and avoid repeated freeze-thaw cycles.
Reconstitution	It is recommended that sterile water be added to the vial to prepare a stock solution of 0.2 ug/ul. Centrifuge the vial at 4°C before opening to recover the entire contents.

GENE INFORMATION

Gene Name	KPNA2 karyopherin alpha 2 (RAG cohort 1, importin alpha 1) [Homo sapiens]
Official Symbol	KPNA2

 Tel: 1-631-559-9269 1-516-512-3133

 Email: info@creative-biomart.com  Fax: 1-631-938-8127

 45-1 Ramsey Road, Shirley, NY 11967, USA

Synonyms KPNA2; karyopherin alpha 2 (RAG cohort 1, importin alpha 1); RCH1; importin subunit alpha-2; IPOA1; QIP2; SRP1alpha; pendulin; SRP1-alpha; RAG cohort 1; importin alpha 1; importin alpha 2; importin-alpha-P1; RAG cohort protein 1; karyopherin subunit alpha-2;

Gene ID [3838](#)

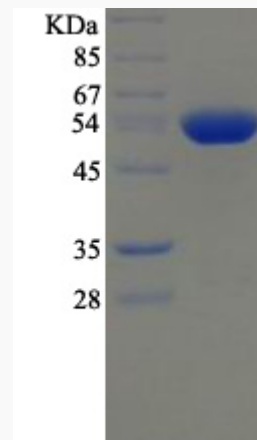
mRNA Refseq [NM_002266](#)

Protein Refseq [NP_002257](#)

MIM [600685](#)

UniProt ID [P52292](#)

SDS-PAGE



 Tel: 1-631-559-9269 1-516-512-3133

 Email: info@creative-biomart.com  Fax: 1-631-938-8127

 45-1 Ramsey Road, Shirley, NY 11967, USA