

Recombinant Human KPNA3 Protein, GST-tagged

Cat. No. KPNA3-4895H Lot. No. (See product label)

SPECIFICATION

| | |
|-------------------------|--|
| Product Overview | Human KPNA3 partial ORF (NP_002258, 422 a.a. - 521 a.a.) recombinant protein with GST-tag at N-terminal. |
| Species | Human |
| Source | Wheat Germ |
| Description | The transport of molecules between the nucleus and the cytoplasm in eukaryotic cells is mediated by the nuclear pore complex (NPC), which consists of 60-100 proteins. Small molecules (up to 70 kD) can pass through the nuclear pore by nonselective diffusion while larger molecules are transported by an active process. The protein encoded by this gene belongs to the importin alpha family, and is involved in nuclear protein import. [provided by RefSeq] |
| Molecular Mass | 36.74 kDa |
| AA Sequence | VKDSQVVQVVL DGLKNILIMAGDEASTIAEIIIECGGLEKIEVLQQHENEDIYKLAFEIID QYFSGDDIDEDPCLIP EATQGGTYNFDPTANLQTKEFNF |
| Applications | Enzyme-linked Immunoabsorbent Assay Western Blot (Recombinant protein) Antibody Production Protein Array |
| Notes | Best use within three months from the date of receipt of this protein. |

 Tel: 1-631-559-9269 1-516-512-3133

 Email: info@creative-biomart.com  Fax: 1-631-938-8127

 45-1 Ramsey Road, Shirley, NY 11967, USA

Storage Store at -80 centigrade. Aliquot to avoid repeated freezing and thawing.

Storage Buffer 50 mM Tris-HCl, 10 mM reduced Glutathione, pH=8.0 in the elution buffer.

GENE INFORMATION

Gene Name KPNA3 karyopherin alpha 3 (importin alpha 4) [Homo sapiens]

Official Symbol KPNA3

Synonyms KPNA3; karyopherin alpha 3 (importin alpha 4); importin subunit alpha-3; hSRP1; IPOA4; SRP1gamma; SRP4; qip2; SRP1-gamma; importin alpha 4; importin alpha-3; importin alpha Q2; importin-alpha-Q2; karyopherin subunit alpha-3; SRP1;

Gene ID 3839

mRNA Refseq NM_002267

Protein Refseq NP_002258

MIM 601892

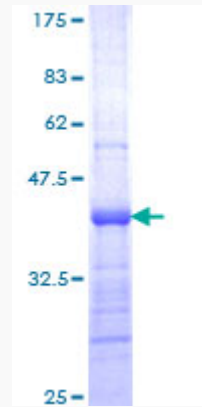
UniProt ID O00505

 Tel: 1-631-559-9269 1-516-512-3133

 Email: info@creative-biomart.com  Fax: 1-631-938-8127

 45-1 Ramsey Road, Shirley, NY 11967, USA

**Quality Control
Testing**



12.5% SDS-PAGE Stained with Coomassie Blue

 Tel: 1-631-559-9269 1-516-512-3133

 Email: info@creative-biomart.com  Fax: 1-631-938-8127

 45-1 Ramsey Road, Shirley, NY 11967, USA