

Recombinant Human KPNA3 protein, His & T7-tagged

Cat. No. KPNA3-7882H Lot. No. (See product label)

SPECIFICATION

Product Overview	Recombinant Human KPNA3 aa. (Glu3~Val220 (Accession # O00505)) fused with N-terminal His & T7 tag was produced in E. coli cells.
Species	Human
Source	E.coli
ProteinLength	Glu3~Val220
Description	The transport of molecules between the nucleus and the cytoplasm in eukaryotic cells is mediated by the nuclear pore complex (NPC), which consists of 60-100 proteins. Small molecules (up to 70 kD) can pass through the nuclear pore by nonselective diffusion while larger molecules are transported by an active process. The protein encoded by this gene belongs to the importin alpha family, and is involved in nuclear protein import.
Form	Freeze-dried powder
Molecular Mass	Predicted Molecular Mass: 28.0kDa.
Endotoxin	<1.0EU per 1ug (determined by the LAL method)
Purity	>95%
Characteristic	The isoelectric point is 7.2.

 Tel: 1-631-559-9269 1-516-512-3133

 Email: info@creative-biomart.com  Fax: 1-631-938-8127

 45-1 Ramsey Road, Shirley, NY 11967, USA

Applications	SDS-PAGE; WB; ELISA; IP.
Stability	The thermal stability is described by the loss rate of the target protein. The loss rate was determined by accelerated thermal degradation test, that is, incubate the protein at 37°C for 48h, and no obvious degradation and precipitation were observed. (Referring from China Biological Products Standard, which was calculated by the Arrhenius equation.) The loss of this protein is less than 5% within the expiration date under appropriate storage condition.
Storage	Avoid repeated freeze/thaw cycles. Store at 2-8°C for one month. Aliquot and store at -80°C for 12 months.
Storage Buffer	Supplied as lyophilized form in PBS, pH7.4, containing 5% trehalose, 0.01% sarcosyl.
Reconstitution	Reconstitute in sterile PBS, pH7.2-pH7.4.

GENE INFORMATION

Gene Name	KPNA3 karyopherin subunit alpha 3 [Homo sapiens (human)]
Official Symbol	KPNA3
Synonyms	KPNA3; karyopherin subunit alpha 3; SRP1; SRP4; IPOA4; hSRP1; SRP1gamma; importin subunit alpha-4; SRP1-gamma; importin alpha 4; importin alpha Q2; importin alpha-3; importin subunit alpha-3; karyopherin alpha 3 (importin alpha 4); qip2
Gene ID	3839
mRNA Refseq	NM_002267.3
Protein Refseq	NP_002258.2

 Tel: 1-631-559-9269 1-516-512-3133

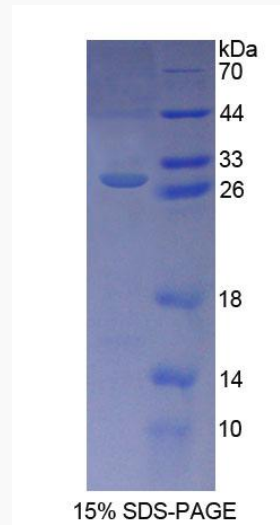
 Email: info@creative-biomart.com  Fax: 1-631-938-8127

 45-1 Ramsey Road, Shirley, NY 11967, USA

UniProt ID

O00505

SDS-PAGE



 Tel: 1-631-559-9269 1-516-512-3133

 Email: info@creative-biomart.com  Fax: 1-631-938-8127

 45-1 Ramsey Road, Shirley, NY 11967, USA