

Recombinant Full Length Human KPNA6 Protein, C-Flag-tagged

Cat. No. KPNA6-1696HFL **Lot. No.** (See product label)

SPECIFICATION

Product Overview	Recombinant Full Length Human KPNA6 Protein, fused to Flag-tag at C-terminus, was expressed in Mammalian cells.
Species	Human
Source	Mammalian Cells
Description	Nucleocytoplasmic transport, a signal- and energy-dependent process, takes place through nuclear pore complexes embedded in the nuclear envelope. The import of proteins containing a nuclear localization signal (NLS) requires the NLS import receptor, a heterodimer of importin alpha and beta subunits also known as karyopherins. Importin alpha binds the NLS-containing cargo in the cytoplasm and importin beta docks the complex at the cytoplasmic side of the nuclear pore complex. In the presence of nucleoside triphosphates and the small GTP binding protein Ran, the complex moves into the nuclear pore complex and the importin subunits dissociate. Importin alpha enters the nucleoplasm with its passenger protein and importin beta remains at the pore. The protein encoded by this gene is a member of the importin alpha family.
Form	25 mM Tris HCl, pH 7.3, 100 mM glycine, 10% glycerol.
Molecular Mass	59.8 kDa
AA Sequence	METMASPGKDNRYRMKSYKNNALNPEEMRRRREEEGIQLRKQKREQQLFKRRNVEL

 Tel: 1-631-559-9269 1-516-512-3133

 Email: info@creative-biomart.com  Fax: 1-631-938-8127

 45-1 Ramsey Road, Shirley, NY 11967, USA

INEEAAMFDSLLMDS YVSSTTGESVITREMVEMLFSDSDLQLATTQKFRKLLSKEP
 SPPIDEVINTPRVVDRFVEFLKRNENCT LQFEAAWALTNIASGTSQQTKIVIEAGAVPI
 FIELLNSDFEDVQEQAVWALGNIAGDSSVCRDYVLNCSI LNPLLTLTKSTRLTMTNRN
 AVWALSNLCRGKNPPPEFAKVSPCLPVLSRLLFSSSDSLLADACWALSYSLS DGPNE
 KIQAVIDSGVCRRLVELLMHNDYKVASPALRAVGNIVTGDDIQTQVILNCSALPCLLHL
 LSSPKE SIRKEACWTISNITAGNRAQIQAVIDANIFPVLIEILQKAEFRTRKEAAWAITN
 ATSGGTPEQIRYLVSL GCIKPLCDLLTVMDSKIVQVALNGLLENILRLGEGEGKRS GS
 GVNPHYGLIEEAYGLDKIEFLQSHENQEI
 YQKAFDLIEHYFGVEDDDSSLAPQVDETQQQFIFQQPEAPMEGFQLTRTRPLEQKLI
 SEEDLAANDILDYKDDDDKV

Purity	> 80% as determined by SDS-PAGE and Coomassie blue staining.
Stability	Stable for 12 months from the date of receipt of the product under proper storage and handling conditions. Avoid repeated freeze-thaw cycles.
Storage	Store at -80 centigrade.
Concentration	>50 ug/mL as determined by microplate BCA method.
Preparation	Recombinant protein was captured through anti-DDK affinity column followed by conventional chromatography steps.
Protein Families	Druggable Genome
Full Length	Full L.

GENE INFORMATION

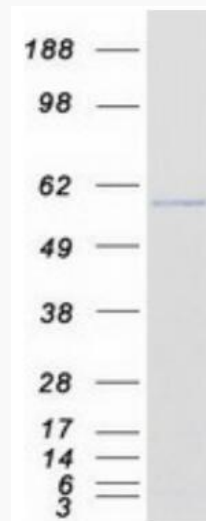
Gene Name KPNA6 karyopherin subunit alpha 6 [Homo sapiens (human)]

 Tel: 1-631-559-9269 1-516-512-3133

 Email: info@creative-biomart.com  Fax: 1-631-938-8127

 45-1 Ramsey Road, Shirley, NY 11967, USA

Official Symbol	KPNA6
Synonyms	IPOA7
Gene ID	23633
mRNA Refseq	NM_012316.5
Protein Refseq	NP_036448.1
MIM	610563
UniProt ID	O60684



Coomassie blue staining of purified KPNA6 protein.

Tel: 1-631-559-9269 1-516-512-3133

Email: info@creative-biomart.com Fax: 1-631-938-8127

45-1 Ramsey Road, Shirley, NY 11967, USA