

# Recombinant Human KPNA6 Protein, Myc/DDK-tagged, C13 and N15-labeled

**Cat. No.** KPNA6-4880H    **Lot. No.** (See product label)

## SPECIFICATION

<b>Product Overview</b>	KPNA6 MS Standard C13 and N15-labeled recombinant protein (NP_036448) with a C-terminal MYC/DDK tag, was expressed in HEK293 cells.
<b>Species</b>	Human
<b>Source</b>	HEK293
<b>Description</b>	Nucleocytoplasmic transport, a signal- and energy-dependent process, takes place through nuclear pore complexes embedded in the nuclear envelope. The import of proteins containing a nuclear localization signal (NLS) requires the NLS import receptor, a heterodimer of importin alpha and beta subunits also known as karyopherins. Importin alpha binds the NLS-containing cargo in the cytoplasm and importin beta docks the complex at the cytoplasmic side of the nuclear pore complex. In the presence of nucleoside triphosphates and the small GTP binding protein Ran, the complex moves into the nuclear pore complex and the importin subunits dissociate. Importin alpha enters the nucleoplasm with its passenger protein and importin beta remains at the pore. The protein encoded by this gene is a member of the importin alpha family.
<b>Molecular Mass</b>	59.8 kDa
<b>AA Sequence</b>	METMASPGKDNRYRMKSYKNNALNPEEMRRRRREEEGIQLRKQKREQQLFKRRNVEL INEEAAMFDSLLMDSYVSSTTGESVITREMVEMLFSDSDLQLATTQKFRKLLSKEP

 Tel: 1-631-559-9269    1-516-512-3133

 Email: [info@creative-biomart.com](mailto:info@creative-biomart.com)     Fax: 1-631-938-8127

 45-1 Ramsey Road, Shirley, NY 11967, USA

SPPIDEVINTPRVVDRFVEFLKRNENCTLQFEAAWALTNIASGTSQQTKIVIEAGAVPI  
 FIELLNSDFEDVQEQAVWALGNIAGDSSVCRDYVLNCSILNPLLTLLTKSTRLTMTRN  
 AVWALSNLRCRGKNPPPEFAKVSPCLPVLSRLLFSSSDSLLADACWALSYLSDGPNE  
 KIQAVIDSGVCRRLVELLMHNDYKVASPALRAVGNIVTGDDIQTQVILNCSALPCLLHL  
 LSSPKESIRKEACWTISNITAGNRAQIQAVIDANIFPVLIEILQKAEFRTRKEAAWAITN  
 ATSGGTPEQIRYLVSLGCIKPLCDLLTVMDSKIVQVALNGLNLRRLGEGEKRSRSGS  
 VNPYCGLIEEAYGLDKIEFLQSHENQEIQKAFDLIEHYFGVEDDDSSLAPQVDETQQ  
 QFIFQQPEAPMEGFQLTRTRPLEQKLISEEDLAANDILDYKDDDDKV

<b>Purity</b>	> 80% as determined by SDS-PAGE and Coomassie blue staining
<b>Stability</b>	Stable for 3 months from receipt of products under proper storage and handling conditions.
<b>Storage</b>	Store at -80 centigrade. Avoid repeated freeze-thaw cycles.
<b>Concentration</b>	50 µg/mL as determined by BCA
<b>Storage Buffer</b>	100 mM glycine, 25 mM Tris-HCl, pH 7.3.

## GENE INFORMATION

<b>Gene Name</b>	KPNA6 karyopherin subunit alpha 6 [ Homo sapiens (human) ]
<b>Official Symbol</b>	KPNA6
<b>Synonyms</b>	KPNA6; karyopherin alpha 6 (importin alpha 7); importin subunit alpha-7; FLJ11249; IPOA7; KPNA7; MGC17918; importin-alpha-S2; importin alpha 7 subunit; karyopherin subunit alpha-6;
<b>Gene ID</b>	23633

 Tel: 1-631-559-9269 1-516-512-3133

 Email: [info@creative-biomart.com](mailto:info@creative-biomart.com)  Fax: 1-631-938-8127

 45-1 Ramsey Road, Shirley, NY 11967, USA

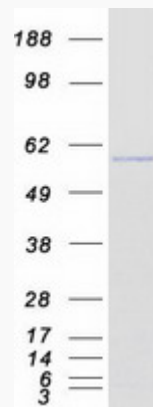
mRNA Refseq [NM\\_012316](#)

Protein Refseq [NP\\_036448](#)

MIM [610563](#)

UniProt ID [O60684](#)

SDS-PAGE



 Tel: 1-631-559-9269 1-516-512-3133

 Email: [info@creative-biomart.com](mailto:info@creative-biomart.com)  Fax: 1-631-938-8127

 45-1 Ramsey Road, Shirley, NY 11967, USA