

Recombinant Human KPNA6 Protein, GST-tagged

Cat. No. KPNA6-4892H Lot. No. (See product label)

SPECIFICATION

Product Overview	Human KPNA6 full-length ORF (NP_036448.1, 1 a.a. - 536 a.a.) recombinant protein with GST-tag at N-terminal.
Species	Human
Source	Wheat Germ
Description	Nucleocytoplasmic transport, a signal- and energy-dependent process, takes place through nuclear pore complexes embedded in the nuclear envelope. The import of proteins containing a nuclear localization signal (NLS) requires the NLS import receptor, a heterodimer of importin alpha and beta subunits also known as karyopherins. Importin alpha binds the NLS-containing cargo in the cytoplasm and importin beta docks the complex at the cytoplasmic side of the nuclear pore complex. In the presence of nucleoside triphosphates and the small GTP binding protein Ran, the complex moves into the nuclear pore complex and the importin subunits dissociate. Importin alpha enters the nucleoplasm with its passenger protein and importin beta remains at the pore. The protein encoded by this gene is a member of the importin alpha family. [provided by RefSeq]
Molecular Mass	86.4 kDa
AA Sequence	METMASPGKDNRYRMKSYKNNALNPEEMRRRREEEGIQLRKQKREQQLFKRRNVEL INEEAAMFDSLMLDSYVSSTTGESVITREMVEMLFSDSDLQLATTQKFRKLLSKEP SPPIDEVINTPRVVDRFVEFLKRNENCTLQFEAAWALTNIASGTSQQTKIVIEAGAVPI

 Tel: 1-631-559-9269 1-516-512-3133

 Email: info@creative-biomart.com  Fax: 1-631-938-8127

 45-1 Ramsey Road, Shirley, NY 11967, USA

FIELNSDFEDVQEQAVWALGNIAGDSSVCRDYVLNCSILNPLLTLTKSTRMTMTRN
 AVWALSNLRCRGKNPPPEFAKVSPCLPVLRSLLFSSSDSLLADACWALSYLSDGPNE
 KIQAVIDSGVCRRLVELLMHNDYKVASPALRAVGNIVTGDDIQTQVILNCSALPCLLHL
 LSSPKESIRKEACWTISNITAGNRAQIQAVIDANIFPVLIEILQKAEFRTRKEAAWAITN
 ATSGGTPEQIRYLVSLGCIKPLCDLLTVMSKIVQVALNGLNLRRLGEGEKRSRSGS
 VNPYCGLIEEAYGLDKIEFLQSHENQEIYQKAFDLIEHYFGVEDDDSSLAPQVDETQQ
 QFIFQQPEAPMEGFQL

Applications	Enzyme-linked Immunoabsorbent Assay Western Blot (Recombinant protein) Antibody Production Protein Array
Notes	Best use within three months from the date of receipt of this protein.
Storage	Store at -80 centigrade. Aliquot to avoid repeated freezing and thawing.
Storage Buffer	50 mM Tris-HCl, 10 mM reduced Glutathione, pH=8.0 in the elution buffer.

GENE INFORMATION

Gene Name	KPNA6 karyopherin alpha 6 (importin alpha 7) [Homo sapiens]
Official Symbol	KPNA6
Synonyms	KPNA6; karyopherin alpha 6 (importin alpha 7); importin subunit alpha-7; FLJ11249; IPOA7; KPNA7; MGC17918; importin-alpha-S2; importin alpha 7 subunit; karyopherin subunit alpha-6;
Gene ID	23633

 Tel: 1-631-559-9269 1-516-512-3133

 Email: info@creative-biomart.com  Fax: 1-631-938-8127

 45-1 Ramsey Road, Shirley, NY 11967, USA

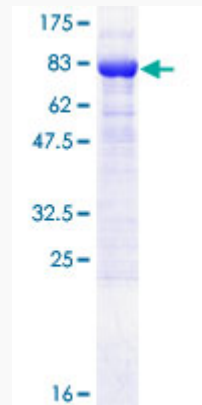
mRNA Refseq NM_012316

Protein Refseq NP_036448

MIM 610563

UniProt ID O60684

**Quality Control
Testing**



12.5% SDS-PAGE Stained with Coomassie Blue

 Tel: 1-631-559-9269 1-516-512-3133

 Email: info@creative-biomart.com  Fax: 1-631-938-8127

 45-1 Ramsey Road, Shirley, NY 11967, USA