

Recombinant Human KPNA7 Protein, Myc/DDK-tagged, C13 and N15-labeled

Cat. No. KPNA7-728H **Lot. No.** (See product label)

SPECIFICATION

Product Overview	KPNA7 MS Standard C13 and N15-labeled recombinant protein (NP_001139187) with a C-terminal MYC/DDK tag, was expressed in HEK293 cells.
Species	Human
Source	HEK293
Description	The transport of molecules between the nucleus and the cytoplasm in eukaryotic cells is mediated by the nuclear pore complex (NPC), which consists of 60-100 proteins. Small molecules (up to 70 kD) can pass through the nuclear pore by nonselective diffusion while larger molecules are transported by an active process. The protein encoded by this gene belongs to the importin alpha family, and is involved in nuclear protein import, but exhibits different nuclear localization signal binding specificity compared to other members of the family. A pseudogene of this gene has been defined on chromosome 5.
Molecular Mass	56.8 kDa
AA Sequence	MPTLDAPEERRRKFYRGKDVSLRRQQRMAVSLELRKAKKDEQTLKRRNITSFCPD TPSEKTAKGVAVSLTLGEIIKGVNSSDPVLCFQATQTARKMLSQEKNPPLKLVIEAGLI PRMVEFLKSSLYPCLQFEAAWALTNIASGTSEQTRAVVEGGAIQPLIELLSSSNVAVC EQAVWALGNIAGDGPEFRDNVITSNAIPHLLALISPTLPITFLRNITWTLNLCRNKNP YPCDTAVKQILPALLHLLQHQDSEVLSDACWALSYLTDGSNKRIGQVVNTGVLPRLV

 Tel: 1-631-559-9269 1-516-512-3133

 Email: info@creative-biomart.com  Fax: 1-631-938-8127

 45-1 Ramsey Road, Shirley, NY 11967, USA

VLMTSSELNVLTPSLRTVGNIVTGTDEQTQMAIDAGMLNVLPQLLQHNKPSIQKEAA
 WALSNVAAGPCHHIQQLLAYDVLPLVALLKNGEFKQKEAVWMVANFATGATMD
 QLIQLVHSGVLEPLVNLTPDVKIVLIILDVISCILQAAEKRSEKENLCLLIEELGGIDRI
 EALQLHENRQIGQSALNIIKHFGEEDESQTLLSQVIDQDYEFIDYECLAKKTRTRPL
 EQKLISEEDLAANDILDYKDDDDKV

Purity > 80% as determined by SDS-PAGE and Coomassie blue staining

Stability Stable for 3 months from receipt of products under proper storage and handling conditions.

Storage Store at -80 centigrade. Avoid repeated freeze-thaw cycles.

Concentration 50 µg/mL as determined by BCA

Storage Buffer 100 mM glycine, 25 mM Tris-HCl, pH 7.3.

GENE INFORMATION

Gene Name [KPNA7 karyopherin subunit alpha 7 \[Homo sapiens \(human\) \]](#)

Official Symbol [KPNA7](#)

Synonyms KPNA7; karyopherin subunit alpha 7; IPOA8; importin subunit alpha-8; karyopherin alpha 7

Gene ID [402569](#)

mRNA Refseq [NM_001145715](#)

Protein Refseq [NP_001139187](#)

 Tel: 1-631-559-9269 1-516-512-3133

 Email: info@creative-biomart.com  Fax: 1-631-938-8127

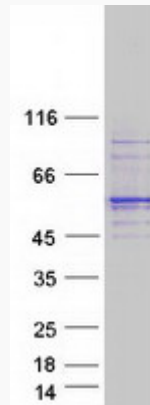
 45-1 Ramsey Road, Shirley, NY 11967, USA



MIM 614107

UniProt ID A9QM74

SDS-PAGE



Tel: 1-631-559-9269 1-516-512-3133

Email: info@creative-biomart.com Fax: 1-631-938-8127

45-1 Ramsey Road, Shirley, NY 11967, USA