

# Recombinant Human Karyopherin (importin) Beta 1, His-tagged

Cat. No. KPNB1-1316H Lot. No. (See product label)

## SPECIFICATION

<b>Product Overview</b>	Recombinant human KPNB1 protein, fused to His-tag at N-terminus, was expressed in E.coli and purified by using conventional chromatography techniques.
<b>Species</b>	Human
<b>Source</b>	E.coli
<b>ProteinLength</b>	1-876 aa
<b>Description</b>	KPNB1 is a member of the importin beta family. This protein is involved in nuclear protein import, either by associating itself with an adapter protein (for example, importin-alpha subunit which binds to nuclear localization signals (NLS) in cargo substrates), or by acting autonomously as a nuclear transport receptor (serves as NLS receptor, docking of the importin/substrate complex to the nuclear pore complex).
<b>Form</b>	Liquid. In 20 mM Tris-HCl buffer (pH 8.0) containing 1 mM DTT, 30% glycerol, 0.1 NaCl.
<b>Molecular Weight</b>	99.6 kDa (899 aa)
<b>Purity</b>	> 85 % by SDS-PAGE
<b>Concentration</b>	0.25 mg/ml (determined by Bradford assay)

 Tel: 1-631-559-9269 1-516-512-3133

 Email: [info@creative-biomart.com](mailto:info@creative-biomart.com)  Fax: 1-631-938-8127

 45-1 Ramsey Road, Shirley, NY 11967, USA

**Sequences of amino acids**

MGSSHHHHH SSGLVPRGSH MGSMELITIL EKTVSPDRLE LEAAQKFLER  
AAVENLPTFL VELSRVLANP GNSQVARVAA GLQIKNSLTS KDPDIKAQYQ  
QRWLAIANA RREVKNYVLQ TLGTETYRPS SASQCVAGIA CAEIPVNQWP  
ELIPQLVANV TNPNSTEHMK ESTLEAIGYI CQDIDPEQLQ DKSNEILTAI  
IQGMRKEEPS NNVKLAATNA LLNSLEFTKA NFDKESERHF IMQVVCEATQ  
CPDTRVRVAA LQNLVKIMSL YYQYMETYMG PALFAITIEA MKSDIDEVAL  
QGIEFWSNVC DEEMDLAIEA SEAAEQGRPP EHTSKFYAKG ALQYLVPILT  
QTLTKQDEND DDDDWNPCKA AGVCLMLLAT CCEDDIVPHV LPFIKEHIKN  
PDWRYRDAAV MAFGCILEGP EPSQLKPLVI QAMPTLIELM KDPSVVVRDT  
AAWTVGRICE LLPEAAINDV YLAPLLQCLI EGLSAEPRVA SNVCWAFSSL  
AEEAYEADV ADDQEEPATY CLSSSFELIV QKLETTDRP DGHQNNLRSS  
AYESLMEIVK NSAKDCYP AV QKTTLVIMER LQQVLQ MESH IQSTSDRIQF  
NDLQSLLCAT LQNVLRKVQH QDALQISDVV MASLLRMFQS TAGSGGVQED  
ALMAVSTLVE VLGGEFLKYM EAFKPFLGIG LKNYAEYQVC LAAVGLVGD  
CRALQSNII FCDEVMQLLL ENLGNENVHR SVKPKILSVF GDIALAIGGE  
FKKYLEVVLN TLQQASQAQV DKSDYDMVDY LNELRESCLE AYTGIVQGLK  
GDQENVHPDV MLVQPRVEFI LSFIDHIAGD EDHTDGVVAC AAGLIGDLCT  
AFGKDV LKLV EARPMIHELL TEGRRSKTNK AKTLATWATK ELRKLKNQA

**Storage**

Can be stored at +4°C short term (1-2 weeks). For long term storage, aliquot and store at -20°C or -70°C. Avoid repeated freezing and thawing cycles.

**Pathways**

Activation of DNA fragmentation factor; Apoptosis; Apoptosis induced DNA fragmentation; Apoptotic execution phase; HIV Infection; Host Interactions of HIV factors; Influenza Infection; Influenza Life Cycle; Interactions of Rev with host cellular proteins; Nuclear import of Rev protein; RNA transport; RNA transport; Role of Calcineurin-dependent NFAT signaling in lymphocytes; Signaling events mediated by TCPTP; TGF-beta Receptor Signaling Pathway

**GENE INFORMATION**

 Tel: 1-631-559-9269 1-516-512-3133

 Email: [info@creative-biomart.com](mailto:info@creative-biomart.com)  Fax: 1-631-938-8127

 45-1 Ramsey Road, Shirley, NY 11967, USA

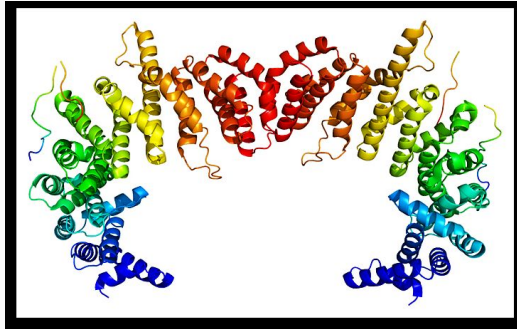
<b>Gene Name</b>	KPNB1 karyopherin (importin) beta 1 [ Homo sapiens ]
<b>Official Symbol</b>	KPNB1
<b>Synonyms</b>	KPNB1; karyopherin (importin) beta 1; IMB1; IPO1; IPOB; Impnb; NTF97; MGC2155; MGC2156; MGC2157; karyopherin beta 1; importin 1; importin 90; nuclear factor p97; importin beta-1 subunit; Importin-90; Karyopherin subunit beta-1; Nuclear factor P97; karyopherin (importin) beta 1
<b>Gene ID</b>	3837
<b>mRNA Refseq</b>	NM_002265
<b>Protein Refseq</b>	NP_002256
<b>MIM</b>	602738
<b>UniProt ID</b>	Q14974
<b>Chromosome Location</b>	17q21.32
<b>Function</b>	nuclear localization sequence binding; protein binding; protein domain specific binding; protein transporter activity; zinc ion binding

 Tel: 1-631-559-9269 1-516-512-3133

 Email: [info@creative-biomart.com](mailto:info@creative-biomart.com)  Fax: 1-631-938-8127

 45-1 Ramsey Road, Shirley, NY 11967, USA

PDB rendering based  
on 1f59.



 Tel: 1-631-559-9269 1-516-512-3133

 Email: [info@creative-biomart.com](mailto:info@creative-biomart.com)  Fax: 1-631-938-8127

 45-1 Ramsey Road, Shirley, NY 11967, USA