

Recombinant Human KPNB1 Protein (Met1-Ala876), N-His tagged

Cat. No. KPNB1-4369H Lot. No. (See product label)

SPECIFICATION

Product Overview	Recombinant human KPNB1 (Met1-Ala876) fused with the N-terminal His tag was expressed in E. coli.
Species	Human
Source	E.coli
ProteinLength	Met1-Ala876
Form	Lyophilized powder/frozen liquid
Molecular Mass	96.36 kDa
Purity	>90% as determined by SDS-PAGE.
Notes	For research use only.
Storage	Use a manual defrost freezer and avoid repeated freeze thaw cycles. Store at 2 to 8 centigrade for one week. Store at -20 to -80 centigrade for twelve months from the date of receipt.
Storage Buffer	Supplied as solution form in PBS or lyophilized from PBS.
Reconstitution	Reconstitute in sterile water for a stock solution.

 Tel: 1-631-559-9269 1-516-512-3133

 Email: info@creative-biomart.com  Fax: 1-631-938-8127

 45-1 Ramsey Road, Shirley, NY 11967, USA

Shipping They are shipped out with dry ice/blue ice unless customers require otherwise.

GENE INFORMATION

Gene Name [KPNB1 karyopherin \(importin\) beta 1 \[Homo sapiens \(human\) \]](#)

Official Symbol [KPNB1](#)

Synonyms KPNB1; karyopherin (importin) beta 1; importin subunit beta-1; IMB1; Impnb; importin 1; IPO1; IPOB; MGC2155; MGC2156; MGC2157; NTF97; PTAC97; importin 90; importin-90; nuclear factor p97; importin beta-1 subunit; karyopherin subunit beta-1; pore targeting complex 97 kDa subunit;

Gene ID [3837](#)

mRNA Refseq [NM_002265](#)

Protein Refseq [NP_002256](#)

MIM [602738](#)

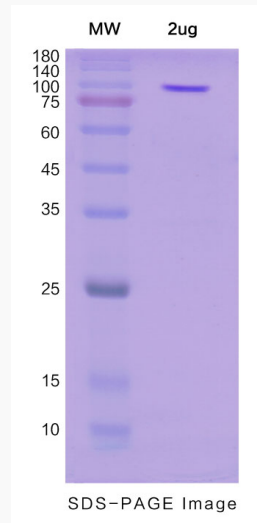
UniProt ID [Q14974](#)

 Tel: 1-631-559-9269 1-516-512-3133

 Email: info@creative-biomart.com  Fax: 1-631-938-8127

 45-1 Ramsey Road, Shirley, NY 11967, USA

SDS-PAGE



 Tel: 1-631-559-9269 1-516-512-3133

 Email: info@creative-biomart.com  Fax: 1-631-938-8127

 45-1 Ramsey Road, Shirley, NY 11967, USA