

Recombinant Human KPTN Protein, GST-tagged

Cat. No. KPTN-4889H Lot. No. (See product label)

SPECIFICATION

Product Overview	Human KPTN full-length ORF (AAH09249, 1 a.a. - 436 a.a.) recombinant protein with GST-tag at N-terminal.
Species	Human
Source	Wheat Germ
Description	This gene encodes a filamentous-actin-associated protein, which is involved in actin dynamics and plays an important role in neuromorphogenesis. Mutations in this gene result in recessive mental retardation-41. Alternatively spliced transcript variants have been found for this gene. [provided by RefSeq, Apr 2014]
Molecular Mass	73.7 kDa
AA Sequence	MMGEAAVAAGPCPLREDSFTRFSSQSNVYGLAGGAGGRGELLAATLKGKVLGFRY QDLRQKIRPVAKELQFNYPVDAEIVSIDTFNKSPPKRGLVVGITFIKDSGDKGSPFLNI YCDYEPGSEYNLDSIAQSCNLELQFTPFQLCHAEVQVGDQLETVFLLSGNDPAIHL YKENEGLHQFEEQPVENLFP ELTNLTSSVLWLDVHNFPGT SRRLSALGCQSGYVRV AHVDQRSREVLQMWSVLQDGPISRIVVFSLSAAKETKDRPLQDEYSVLVASMLEPA VVYRDLLNRGLEDQLLLPGSDQFDSVLC SLVTDVDLDGRPEVLVATYQGELLCYKY RGPEGLPEAQHGFHLLWQRSFSSPLLAMAHVDLTGDGLQELAVVSLKGVHILQHS LIQASELVLTRLRHQVEQRRRRLQGLEDGAGAGPAENAAS
Applications	Enzyme-linked Immunoabsorbent Assay Western Blot (Recombinant protein)

Tel: 1-631-559-9269 1-516-512-3133

Email: info@creative-biomart.com Fax: 1-631-938-8127

45-1 Ramsey Road, Shirley, NY 11967, USA



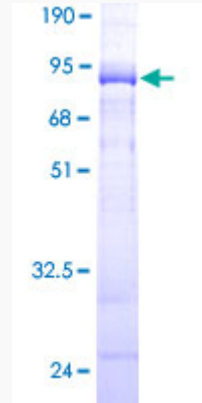
	Antibody Production Protein Array
Notes	Best use within three months from the date of receipt of this protein.
Storage	Store at -80 centigrade. Aliquot to avoid repeated freezing and thawing.
Storage Buffer	50 mM Tris-HCl, 10 mM reduced Glutathione, pH=8.0 in the elution buffer.
GENE INFORMATION	
Gene Name	KPTN kaptin (actin binding protein) [Homo sapiens]
Official Symbol	KPTN
Synonyms	KPTN; kaptin (actin binding protein); kaptin; 2E4; actin-associated protein 2E4; kaptin (actin-binding protein);
Gene ID	11133
mRNA Refseq	NM_007059
Protein Refseq	NP_008990
UniProt ID	Q9Y664

Tel: 1-631-559-9269 1-516-512-3133

Email: info@creative-biomart.com Fax: 1-631-938-8127

45-1 Ramsey Road, Shirley, NY 11967, USA

**Quality Control
Testing**



12.5% SDS-PAGE Stained with Coomassie Blue

 Tel: 1-631-559-9269 1-516-512-3133

 Email: info@creative-biomart.com  Fax: 1-631-938-8127

 45-1 Ramsey Road, Shirley, NY 11967, USA