

# Recombinant Human KRAS G12S mutant Protein, DYKDDDDK-tagged

Cat. No. KRAS-080H Lot. No. (See product label)

## SPECIFICATION

<b>Product Overview</b>	Recombinant protein from the full-length sequence of homo sapiens KRAS proto-oncogene, GTPase (KRAS), G12S mutant, transcript variant b (NM_004985), with a DYKDDDDK tag was expressed in human cells.
<b>Species</b>	Human
<b>Source</b>	Human Cells
<b>Description</b>	This gene, a Kirsten ras oncogene homolog from the mammalian ras gene family, encodes a protein that is a member of the small GTPase superfamily. A single amino acid substitution is responsible for an activating mutation. The transforming protein that results is implicated in various malignancies, including lung adenocarcinoma, mucinous adenoma, ductal carcinoma of the pancreas and colorectal carcinoma. Alternative splicing leads to variants encoding two isoforms that differ in the C-terminal region.
<b>Molecular Mass</b>	24.9 kDa
<b>Endotoxin</b>	Endotoxin level is < 0.1 ng/μg of protein (< 1 EU /μg)
<b>Purity</b>	>90% by SDS-PAGE gel and Coomassie Blue staining
<b>Applications</b>	Antigens, Western, ELISA and other in vitro binding or in vivo functional assays, and protein-protein interaction studies; For research & development use only!

 Tel: 1-631-559-9269 1-516-512-3133

 Email: [info@creative-biomart.com](mailto:info@creative-biomart.com)  Fax: 1-631-938-8127

 45-1 Ramsey Road, Shirley, NY 11967, USA

**Storage Buffer** Purified protein formulated in a sterile solution of PBS buffer, pH7.2, without any preservatives

## GENE INFORMATION

**Gene Name** KRAS KRAS proto-oncogene, GTPase [ Homo sapiens (human) ]

**Official Symbol** KRAS

**Synonyms** KRAS; KRAS proto-oncogene, GTPase; NS; NS3; OES; CFC2; RALD; K-Ras; KRAS1; KRAS2; RASK2; KI-RAS; C-K-RAS; K-RAS2A; K-RAS2B; K-RAS4A; K-RAS4B; K-Ras 2; 'C-K-RAS; c-Ki-ras; c-Ki-ras2; GTPase KRas; K-ras p21 protein; Kirsten rat sarcoma viral oncogene homolog; Kirsten rat sarcoma viral proto-oncogene; PR310 c-K-ras oncogene; c-Kirsten-ras protein; cellular c-Ki-ras2 proto-oncogene; cellular transforming proto-oncogene; oncogene KRAS2; transforming protein p21; v-Ki-ras2 Kirsten rat sarcoma 2 viral oncogene homolog; EC 3.6.5.2

**Gene ID** 3845

**mRNA Refseq** NM\_004985

**Protein Refseq** NP\_004976

**MIM** 190070

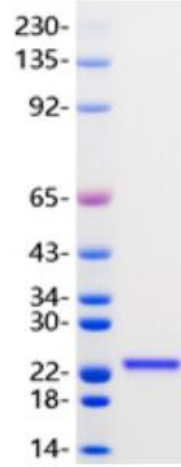
**UniProt ID** P01116

 Tel: 1-631-559-9269 1-516-512-3133

 Email: [info@creative-biomart.com](mailto:info@creative-biomart.com)  Fax: 1-631-938-8127

 45-1 Ramsey Road, Shirley, NY 11967, USA

SDS-PAGE



 Tel: 1-631-559-9269 1-516-512-3133

 Email: [info@creative-biomart.com](mailto:info@creative-biomart.com)  Fax: 1-631-938-8127

 45-1 Ramsey Road, Shirley, NY 11967, USA