

Recombinant Human KRAS G12D mutant Protein, DYKDDDDK-tagged

Cat. No. KRAS-081H Lot. No. (See product label)

SPECIFICATION

Product Overview	Recombinant protein from the full-length sequence of homo sapiens KRAS proto-oncogene, GTPase (KRAS), G12D mutant, transcript variant b (NM_004985), with a DYKDDDDK tag was expressed in human cells.
Species	Human
Source	Human Cells
Description	This gene, a Kirsten ras oncogene homolog from the mammalian ras gene family, encodes a protein that is a member of the small GTPase superfamily. A single amino acid substitution is responsible for an activating mutation. The transforming protein that results is implicated in various malignancies, including lung adenocarcinoma, mucinous adenoma, ductal carcinoma of the pancreas and colorectal carcinoma. Alternative splicing leads to variants encoding two isoforms that differ in the C-terminal region.
Molecular Mass	24.9 kDa
Endotoxin	Endotoxin level is < 0.1 ng/μg of protein (< 1 EU /μg)
Purity	>90% by SDS-PAGE gel and Coomassie Blue staining
Applications	Antigens, Western, ELISA and other in vitro binding or in vivo functional assays, and protein-protein interaction studies; For research & development use only!

 Tel: 1-631-559-9269 1-516-512-3133

 Email: info@creative-biomart.com  Fax: 1-631-938-8127

 45-1 Ramsey Road, Shirley, NY 11967, USA

Storage Buffer Purified protein formulated in a sterile solution of PBS buffer, pH7.2, without any preservatives

GENE INFORMATION

Gene Name KRAS KRAS proto-oncogene, GTPase [Homo sapiens (human)]

Official Symbol KRAS

Synonyms

KRAS; KRAS proto-oncogene, GTPase; NS; NS3; OES; CFC2; RALD; K-Ras; KRAS1; KRAS2; RASK2; KI-RAS; C-K-RAS; K-RAS2A; K-RAS2B; K-RAS4A; K-RAS4B; K-Ras 2; 'C-K-RAS; c-Ki-ras; c-Ki-ras2; GTPase KRas; K-ras p21 protein; Kirsten rat sarcoma viral oncogene homolog; Kirsten rat sarcoma viral proto-oncogene; PR310 c-K-ras oncogene; c-Kirsten-ras protein; cellular c-Ki-ras2 proto-oncogene; cellular transforming proto-oncogene; oncogene KRAS2; transforming protein p21; v-Ki-ras2 Kirsten rat sarcoma 2 viral oncogene homolog; EC 3.6.5.2

Gene ID 3845

mRNA Refseq NM_004985

Protein Refseq NP_004976

MIM 190070

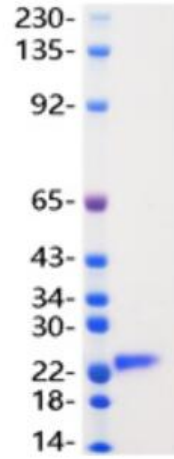
UniProt ID P01116

 Tel: 1-631-559-9269 1-516-512-3133

 Email: info@creative-biomart.com  Fax: 1-631-938-8127

 45-1 Ramsey Road, Shirley, NY 11967, USA

SDS-PAGE



 Tel: 1-631-559-9269 1-516-512-3133

 Email: info@creative-biomart.com  Fax: 1-631-938-8127

 45-1 Ramsey Road, Shirley, NY 11967, USA