

Recombinant Human KRAS (G12V) Protein (2-186), N-His tagged

Cat. No. KRAS-0945H Lot. No. (See product label)

SPECIFICATION

Product Overview

Recombinant human KRAS (G12V) (2-186) was expressed in E.coli cells using an N-terminal His tag.

Species

Human

Source

E.coli

ProteinLength

2-186

Description

This gene, a Kirsten ras oncogene homolog from the mammalian ras gene family, encodes a protein that is a member of the small GTPase superfamily. A single amino acid substitution is responsible for an activating mutation. The transforming protein that results is implicated in various malignancies, including lung adenocarcinoma, mucinous adenoma, ductal carcinoma of the pancreas and colorectal carcinoma. Alternative splicing leads to variants encoding two isoforms that differ in the C-terminal region.

Molecular Mass

23 kDa

Stability


One year at -70 centigrade from date of shipment.

Storage

Store product at -70 centigrade. For optimal storage, aliquot target into smaller quantities after centrifugation and store at recommended temperature. For most favorable performance, avoid repeated handling and multiple freeze/thaw cycles.

 Tel: 1-631-559-9269 1-516-512-3133

 Email: info@creative-biomart.com  Fax: 1-631-938-8127

 45-1 Ramsey Road, Shirley, NY 11967, USA

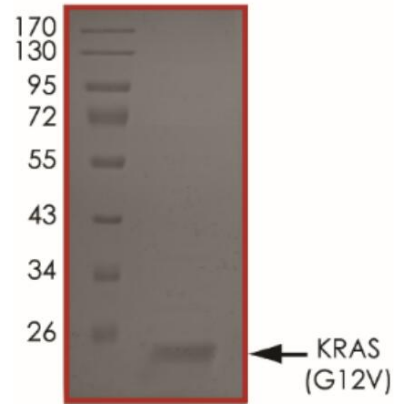
Concentration	1 µg/µL
Storage Buffer	Recombinant protein stored in 50mM sodium phosphate, pH 7.0300mM NaCl, 150mM imidazole, 0.1mM PMSF, 0.25mM DTT, 25% glycerol.
Shipping	On Dry Ice
GENE INFORMATION	
Gene Name	KRAS v-Ki-ras2 Kirsten rat sarcoma viral oncogene homolog [Homo sapiens (human)]
Official Symbol	KRAS
Synonyms	KRAS; v-Ki-ras2 Kirsten rat sarcoma viral oncogene homolog; KRAS2, v Ki ras2 Kirsten rat sarcoma 2 viral oncogene homolog; GTPase KRas; KRAS1; K-Ras 2; c-Ki-ras; oncogene KRAS2; K-ras p21 protein; c-Kirsten-ras protein; PR310 c-K-ras oncogene; transforming protein p21; cellular c-Ki-ras2 proto-oncogene; v-Ki-ras2 Kirsten rat sarcoma 2 viral oncogene homolog; Kirsten rat sarcoma-2 viral (v-Ki-ras2) oncogene homolog; NS; NS3; KRAS2; RASK2; KI-RAS; C-K-RAS; K-RAS2A; K-RAS2B; K-RAS4A; K-RAS4B;
Gene ID	3845
mRNA Refseq	NM_033360
Protein Refseq	NP_203524
MIM	190070
UniProt ID	P01116

 Tel: 1-631-559-9269 1-516-512-3133

 Email: info@creative-biomart.com  Fax: 1-631-938-8127

 45-1 Ramsey Road, Shirley, NY 11967, USA

Purity



 Tel: 1-631-559-9269 1-516-512-3133

 Email: info@creative-biomart.com  Fax: 1-631-938-8127

 45-1 Ramsey Road, Shirley, NY 11967, USA