

Recombinant Human KRAS G12D, Isoform A, GppNHp-loaded, N-His-tagged

Cat. No. KRAS-100H **Lot. No.** (See product label)

SPECIFICATION

Product Overview	<p>Recombinant human KRAS (KRAS proto-oncogene GTPase), isoform a, encompassing amino acids 2-186(end). This construct contains an N-terminal His-tag (6xHis) followed by an optimal TEV protease target sequence that allows cleavage of the His-tag from the protein (TEV: tobacco etch virus cysteine protease). The protein also contains mutation of interest G12D. The protein was affinity purified and loaded with GppNHp, a non-hydrolyzable GTP analog. Unbound GppNHp was removed by spin column. Ready for use in KRAS-RAF binding studies or inhibitor assays.</p>
Species	Human
Source	E.coli
ProteinLength	2-186
Description	<p>This gene, a Kirsten ras oncogene homolog from the mammalian ras gene family, encodes a protein that is a member of the small GTPase superfamily. A single amino acid substitution is responsible for an activating mutation. The transforming protein that results is implicated in various malignancies, including lung adenocarcinoma, mucinous adenoma, ductal carcinoma of the pancreas and colorectal carcinoma. Alternative splicing leads to variants encoding two isoforms that differ in the C-terminal region.</p>
Form	Aqueous buffer solution

 Tel: 1-631-559-9269 1-516-512-3133

 Email: info@creative-biomart.com  Fax: 1-631-938-8127

 45-1 Ramsey Road, Shirley, NY 11967, USA

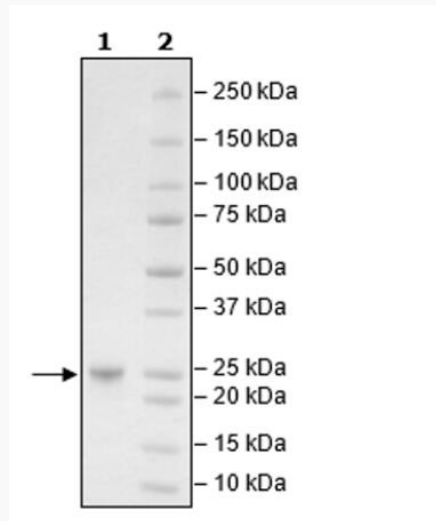
Molecular Mass	23 kDa
Purity	≥90%
Storage Buffer	20 mM HEPES, pH 7.4, 150 mM NaCl, and 1 mM DTT
GENE INFORMATION	
Gene Name	KRAS KRAS proto-oncogene, GTPase [Homo sapiens (human)]
Official Symbol	KRAS
Synonyms	KRAS; KRAS proto-oncogene, GTPase; NS; NS3; OES; CFC2; RALD; K-Ras; KRAS1; KRAS2; RASK2; KI-RAS; C-K-RAS; K-RAS2A; K-RAS2B; K-RAS4A; K-RAS4B; K-Ras 2; 'C-K-RAS; c-Ki-ras; c-Ki-ras2; GTPase KRas; K-ras p21 protein; Kirsten rat sarcoma viral oncogene homolog; Kirsten rat sarcoma viral proto-oncogene; PR310 c-K-ras oncogene; c-Kirsten-ras protein; cellular c-Ki-ras2 proto-oncogene; cellular transforming proto-oncogene; oncogene KRAS2; proto-oncogene GTPase; transforming protein p21; v-Ki-ras2 Kirsten rat sarcoma 2 viral oncogene homolog; EC 3.6.5.2
Gene ID	3845
mRNA Refseq	NM_033360
Protein Refseq	NP_203524
MIM	190070
UniProt ID	P01116

 Tel: 1-631-559-9269 1-516-512-3133

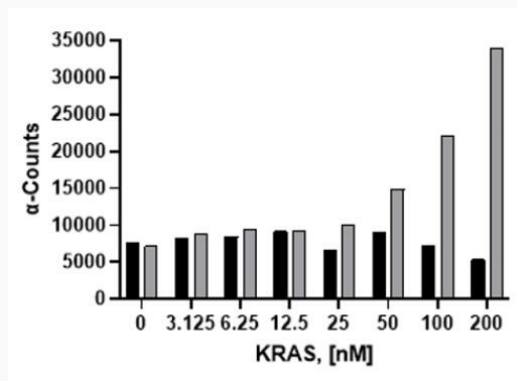
 Email: info@creative-biomart.com  Fax: 1-631-938-8127

 45-1 Ramsey Road, Shirley, NY 11967, USA

SDS-PAGE



Activity



 Tel: 1-631-559-9269 1-516-512-3133

 Email: info@creative-biomart.com  Fax: 1-631-938-8127

 45-1 Ramsey Road, Shirley, NY 11967, USA