

## Recombinant Human KRAS G12D, Isoform A, GDP-loaded, N-His-tagged

Cat. No. KRAS-101H Lot. No. (See product label)

### SPECIFICATION

<b>Product Overview</b>	Recombinant human KRAS (GTPase), isoform a, encompassing amino acids 2-186 (end). This construct contains an N-terminal His-tag (6xHis) followed by an optimal TEV protease target sequence that allows cleavage of the His-tag from the protein (TEV: tobacco etch virus cysteine protease). The recombinant protein also contains a mutation of interest, G12D. The protein was affinity purified and loaded with GDP. Unbound GDP was removed by spin column.
<b>Species</b>	Human
<b>Source</b>	E.coli
<b>ProteinLength</b>	2-186
<b>Description</b>	This gene, a Kirsten ras oncogene homolog from the mammalian ras gene family, encodes a protein that is a member of the small GTPase superfamily. A single amino acid substitution is responsible for an activating mutation. The transforming protein that results is implicated in various malignancies, including lung adenocarcinoma, mucinous adenoma, ductal carcinoma of the pancreas and colorectal carcinoma. Alternative splicing leads to variants encoding two isoforms that differ in the C-terminal region.
<b>Form</b>	Aqueous buffer solution
<b>Molecular Mass</b>	23 kDa

 Tel: 1-631-559-9269 1-516-512-3133

 Email: [info@creative-biomart.com](mailto:info@creative-biomart.com)  Fax: 1-631-938-8127

 45-1 Ramsey Road, Shirley, NY 11967, USA

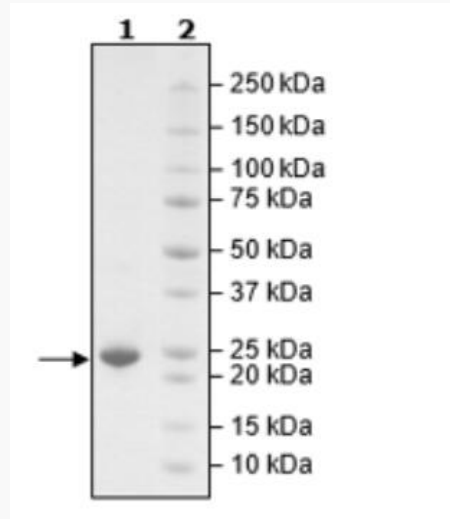
<b>Purity</b>	≥90%
<b>Storage Buffer</b>	20 mM HEPES, pH 7.4, 150 mM NaCl, 1 mM DTT
<b>GENE INFORMATION</b>	
<b>Gene Name</b>	KRAS KRAS proto-oncogene, GTPase [ Homo sapiens (human) ]
<b>Official Symbol</b>	KRAS
<b>Synonyms</b>	KRAS; KRAS proto-oncogene, GTPase; NS; NS3; OES; CFC2; RALD; K-Ras; KRAS1; KRAS2; RASK2; KI-RAS; C-K-RAS; K-RAS2A; K-RAS2B; K-RAS4A; K-RAS4B; K-Ras 2; 'C-K-RAS; c-Ki-ras; c-Ki-ras2; GTPase KRas; K-ras p21 protein; Kirsten rat sarcoma viral oncogene homolog; Kirsten rat sarcoma viral proto-oncogene; PR310 c-K-ras oncogene; c-Kirsten-ras protein; cellular c-Ki-ras2 proto-oncogene; cellular transforming proto-oncogene; oncogene KRAS2; proto-oncogene GTPase; transforming protein p21; v-Ki-ras2 Kirsten rat sarcoma 2 viral oncogene homolog; EC 3.6.5.2
<b>Gene ID</b>	3845
<b>mRNA Refseq</b>	NM_033360
<b>Protein Refseq</b>	NP_203524
<b>MIM</b>	190070
<b>UniProt ID</b>	P01116

 Tel: 1-631-559-9269 1-516-512-3133

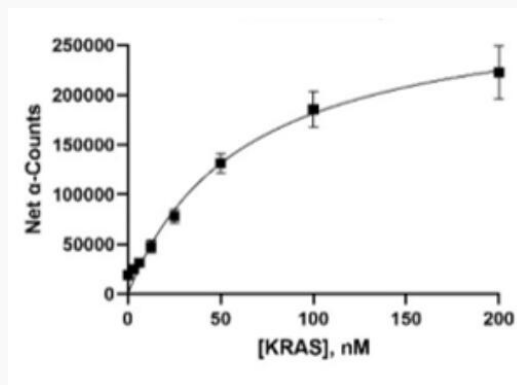
 Email: [info@creative-biomart.com](mailto:info@creative-biomart.com)  Fax: 1-631-938-8127

 45-1 Ramsey Road, Shirley, NY 11967, USA

SDS-PAGE



Activity



Tel: 1-631-559-9269 1-516-512-3133

Email: [info@creative-biomart.com](mailto:info@creative-biomart.com) Fax: 1-631-938-8127

45-1 Ramsey Road, Shirley, NY 11967, USA