

Recombinant Human KRAS, Isoform B, BODIPY-GDP Loaded, N-His-tagged

Cat. No. KRAS-102H **Lot. No.** (See product label)

SPECIFICATION

Product Overview Recombinant human KRAS (GTPase), isoform b, encompassing amino acids 2-185. This construct contains a N-terminal His-tag (6xHis). The protein was affinity purified and was loaded with BODIPY-GDP. Unbound BODIPY-GDP was removed by spin column and the protein is ready for a GDP/GTP exchange assay.

Species Human

Source Sf9 Cells

ProteinLength 2-186

Description This gene, a Kirsten ras oncogene homolog from the mammalian ras gene family, encodes a protein that is a member of the small GTPase superfamily. A single amino acid substitution is responsible for an activating mutation. The transforming protein that results is implicated in various malignancies, including lung adenocarcinoma, mucinous adenoma, ductal carcinoma of the pancreas and colorectal carcinoma. Alternative splicing leads to variants encoding two isoforms that differ in the C-terminal region.

Form Aqueous buffer solution

Molecular Mass 22 kDa

Purity 72%

 Tel: 1-631-559-9269 1-516-512-3133

 Email: info@creative-biomart.com  Fax: 1-631-938-8127

 45-1 Ramsey Road, Shirley, NY 11967, USA

Storage Buffer 20 mM HEPES, pH 7.4, 150 mM NaCl and 1 mM DTT

GENE INFORMATION

Gene Name KRAS KRAS proto-oncogene, GTPase [Homo sapiens (human)]

Official Symbol KRAS

Synonyms

KRAS; KRAS proto-oncogene, GTPase; NS; NS3; OES; CFC2; RALD; K-Ras; KRAS1; KRAS2; RASK2; KI-RAS; C-K-RAS; K-RAS2A; K-RAS2B; K-RAS4A; K-RAS4B; K-Ras 2; 'C-K-RAS; c-Ki-ras; c-Ki-ras2; GTPase KRas; K-ras p21 protein; Kirsten rat sarcoma viral oncogene homolog; Kirsten rat sarcoma viral proto-oncogene; PR310 c-K-ras oncogene; c-Kirsten-ras protein; cellular c-Ki-ras2 proto-oncogene; cellular transforming proto-oncogene; oncogene KRAS2; proto-oncogene GTPase; transforming protein p21; v-Ki-ras2 Kirsten rat sarcoma 2 viral oncogene homolog; EC 3.6.5.2

Gene ID 3845

mRNA Refseq NM_004985

Protein Refseq NP_004976

MIM 190070

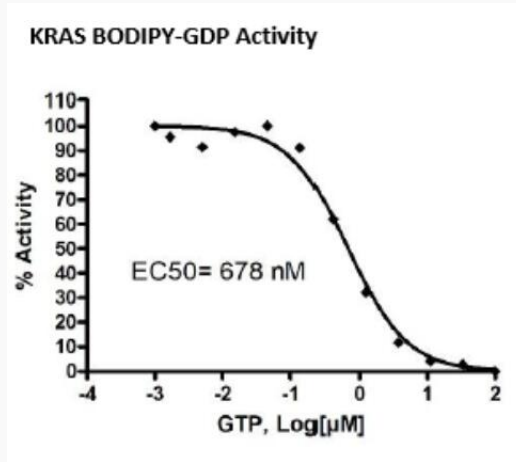
UniProt ID P01116

 Tel: 1-631-559-9269 1-516-512-3133

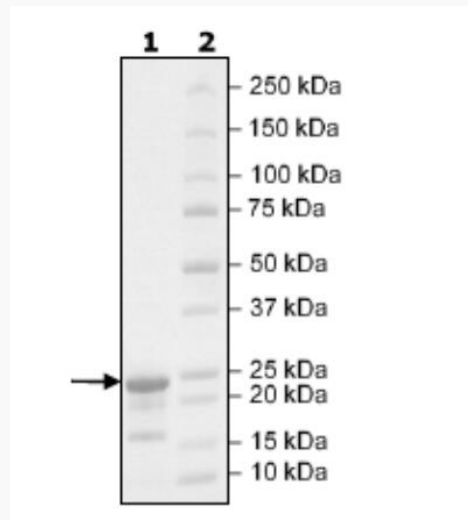
 Email: info@creative-biomart.com  Fax: 1-631-938-8127

 45-1 Ramsey Road, Shirley, NY 11967, USA

SDS-PAGE



Activity



 Tel: 1-631-559-9269 1-516-512-3133

 Email: info@creative-biomart.com  Fax: 1-631-938-8127

 45-1 Ramsey Road, Shirley, NY 11967, USA