

Recombinant Human KRAS (G12D) Protein (1-186), N-His-tagged

Cat. No. KRAS-13H **Lot. No.** (See product label)

SPECIFICATION

Product Overview	Recombinant human KRAS (G12D, Isoform B) (1-186) was expressed in E. coli cells using an N-terminal His tag. KRASB (G12D) is constitutively active.
Species	Human
Source	E.coli
ProteinLength	1-186
Description	This gene, a Kirsten ras oncogene homolog from the mammalian ras gene family, encodes a protein that is a member of the small GTPase superfamily. A single amino acid substitution is responsible for an activating mutation. The transforming protein that results is implicated in various malignancies, including lung adenocarcinoma, mucinous adenoma, ductal carcinoma of the pancreas and colorectal carcinoma. Alternative splicing leads to variants encoding two isoforms that differ in the C-terminal region.
Molecular Mass	~21 kDa
Storage	Store product at -70 centigrade. For optimal storage, aliquot target into smaller quantities after centrifugation and store at recommended temperature. For most favorable performance, avoid repeated handling and multiple freeze/thaw cycles.
Storage Buffer	Recombinant protein stored in 50mM sodium phosphate, pH 7.0, 300mM NaCl,

 Tel: 1-631-559-9269 1-516-512-3133

 Email: info@creative-biomart.com  Fax: 1-631-938-8127

 45-1 Ramsey Road, Shirley, NY 11967, USA

150mM imidazole, 0.25mM DTT, 25% glycerol.

GENE INFORMATION

Gene Name KRAS KRAS proto-oncogene, GTPase [Homo sapiens (human)]

Official Symbol KRAS

Synonyms

KRAS; KRAS proto-oncogene, GTPase; NS; NS3; OES; CFC2; RALD; K-Ras; KRAS1; KRAS2; RASK2; KI-RAS; C-K-RAS; K-RAS2A; K-RAS2B; K-RAS4A; K-RAS4B; K-Ras 2; 'C-K-RAS; c-Ki-ras; c-Ki-ras2; GTPase KRas; K-ras p21 protein; Kirsten rat sarcoma viral oncogene homolog; Kirsten rat sarcoma viral proto-oncogene; PR310 c-K-ras oncogene; c-Kirsten-ras protein; cellular c-Ki-ras2 proto-oncogene; cellular transforming proto-oncogene; oncogene KRAS2; proto-oncogene GTPase; transforming protein p21; v-Ki-ras2 Kirsten rat sarcoma 2 viral oncogene homolog; EC 3.6.5.2

Gene ID 3845

mRNA Refseq NM_004985

Protein Refseq NP_004976

MIM 190070

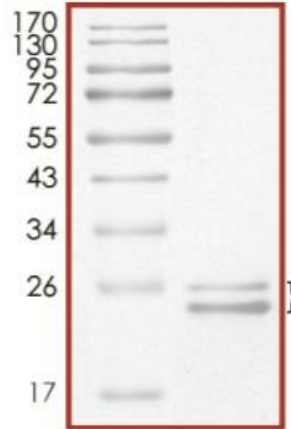
UniProt ID P01116

 Tel: 1-631-559-9269 1-516-512-3133

 Email: info@creative-biomart.com  Fax: 1-631-938-8127

 45-1 Ramsey Road, Shirley, NY 11967, USA

Purity



The purity of KRAS (G12D, Isoform B) was determined to be >70% by densitometry.

Observed MW ~24-27 kDa. Calculated MW ~21 kDa.

(Note: top band present due to post-translational modifications on KRAS Isoform B)

 Tel: 1-631-559-9269 1-516-512-3133

 Email: info@creative-biomart.com  Fax: 1-631-938-8127

 45-1 Ramsey Road, Shirley, NY 11967, USA