

Recombinant Human KRAS Protein, His-tagged(N-ter)

Cat. No. KRAS-224H Lot. No. (See product label)

SPECIFICATION

Product Overview	Recombinant Human KRAS Protein with His tag (N-ter) was expressed in E. coli.
Species	Human
Source	E.coli
ProteinLength	Thr2-Cys186
Description	This gene, a Kirsten ras oncogene homolog from the mammalian ras gene family, encodes a protein that is a member of the small GTPase superfamily. A single amino acid substitution is responsible for an activating mutation. The transforming protein that results is implicated in various malignancies, including lung adenocarcinoma, mucinous adenoma, ductal carcinoma of the pancreas and colorectal carcinoma. Alternative splicing leads to variants encoding two isoforms that differ in the C-terminal region. [provided by RefSeq, Jul 2008]
Form	Powder
Endotoxin	Endotoxin level is less than 1.0 EU/μg of the protein, as determined by the LAL test.
Purity	> 85% (by SDS-PAGE)
Applications	SDS-PAGE
Notes	For laboratory research only, not for drug, diagnostic or other use.

 Tel: 1-631-559-9269 1-516-512-3133

 Email: info@creative-biomart.com  Fax: 1-631-938-8127

 45-1 Ramsey Road, Shirley, NY 11967, USA

Storage Lyophilized protein should be stored at -20°C or -80°C. After reconstitution, aliquot and store at -20°C for up to one month, at 2-8°C for up to one week. Storage in frost free freezers is not recommended. Avoid repeated freeze/thaw cycles. Suggest spin the vial prior to opening.

Storage Buffer PBS (pH 7.4)

Reconstitution Reconstitute to a concentration of 0.1-0.5 mg/ml in sterile distilled water.

GENE INFORMATION

Gene Name [KRAS v-Ki-ras2 Kirsten rat sarcoma viral oncogene homolog \[Homo sapiens \]](#)

Official Symbol [KRAS](#)

Synonyms KRAS; v-Ki-ras2 Kirsten rat sarcoma viral oncogene homolog; KRAS2, v Ki ras2 Kirsten rat sarcoma 2 viral oncogene homolog; GTPase KRas; KRAS1; K-Ras 2; c-Ki-ras; oncogene KRAS2; K-ras p21 protein; c-Kirsten-ras protein; PR310 c-K-ras oncogene; transforming protein p21; cellular c-Ki-ras2 proto-oncogene; v-Ki-ras2 Kirsten rat sarcoma 2 viral oncogene homolog; Kirsten rat sarcoma-2 viral (v-Ki-ras2) oncogene homolog; NS; NS3; KRAS2; RASK2; KI-RAS; C-K-RAS; K-RAS2A; K-RAS2B; K-RAS4A; K-RAS4B;

Gene ID [3845](#)

mRNA Refseq [NM_004985](#)

Protein Refseq [NP_004976](#)

MIM [190070](#)

 Tel: 1-631-559-9269 1-516-512-3133

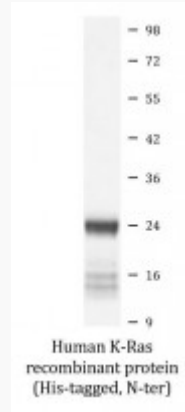
 Email: info@creative-biomart.com  Fax: 1-631-938-8127

 45-1 Ramsey Road, Shirley, NY 11967, USA

UniProt ID

P01116

SDS-PAGE



 Tel: 1-631-559-9269 1-516-512-3133

 Email: info@creative-biomart.com  Fax: 1-631-938-8127

 45-1 Ramsey Road, Shirley, NY 11967, USA