

# Recombinant Human KRAS Protein (Met1-Met188), N-His tagged

Cat. No. KRAS-4373H Lot. No. (See product label)

## SPECIFICATION

<b>Product Overview</b>	Recombinant Human KRAS (Met1-Met188) fused with the N-terminal His tag was expressed in E. coli.
<b>Species</b>	Human
<b>Source</b>	E.coli
<b>Protein Length</b>	Met1-Met188
<b>Form</b>	Lyophilized powder/frozen liquid
<b>Molecular Mass</b>	48.29 kDa
<b>Purity</b>	>90% as determined by SDS-PAGE.
<b>Notes</b>	For research use only.
<b>Storage</b>	Use a manual defrost freezer and avoid repeated freeze thaw cycles. Store at 2 to 8 centigrade for one week. Store at -20 to -80 centigrade for twelve months from the date of receipt.
<b>Storage Buffer</b>	Supplied as solution form in 50 mM Tris-HCl, pH 8.0, 150 mM NaCl, 1mM DTT or lyophilized from 50 mM Tris-HCl, pH 8.0, 150 mM NaCl, 1mM DTT.

 Tel: 1-631-559-9269 1-516-512-3133

 Email: [info@creative-biomart.com](mailto:info@creative-biomart.com)  Fax: 1-631-938-8127

 45-1 Ramsey Road, Shirley, NY 11967, USA

**Reconstitution** Reconstitute in sterile water for a stock solution.

**Shipping** They are shipped out with dry ice/blue ice unless customers require otherwise.

## GENE INFORMATION

**Gene Name** KRAS v-Ki-ras2 Kirsten rat sarcoma viral oncogene homolog [ Homo sapiens (human) ]

**Official Symbol** KRAS

**Synonyms** KRAS; v-Ki-ras2 Kirsten rat sarcoma viral oncogene homolog; KRAS2, v Ki ras2 Kirsten rat sarcoma 2 viral oncogene homolog; GTPase KRas; KRAS1; K-Ras 2; c-Ki-ras; oncogene KRAS2; K-ras p21 protein; c-Kirsten-ras protein; PR310 c-K-ras oncogene; transforming protein p21; cellular c-Ki-ras2 proto-oncogene; v-Ki-ras2 Kirsten rat sarcoma 2 viral oncogene homolog; Kirsten rat sarcoma-2 viral (v-Ki-ras2) oncogene homolog; NS; NS3; KRAS2; RASK2; KI-RAS; C-K-RAS; K-RAS2A; K-RAS2B; K-RAS4A; K-RAS4B;

**Gene ID** 3845

**mRNA Refseq** NM\_004985

**Protein Refseq** NP\_004976

**MIM** 190070

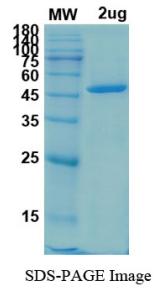
**UniProt ID** P01116

 Tel: 1-631-559-9269 1-516-512-3133

 Email: [info@creative-biomart.com](mailto:info@creative-biomart.com)  Fax: 1-631-938-8127

 45-1 Ramsey Road, Shirley, NY 11967, USA

**SDS-PAGE**



 Tel: 1-631-559-9269 1-516-512-3133

 Email: [info@creative-biomart.com](mailto:info@creative-biomart.com)  Fax: 1-631-938-8127

 45-1 Ramsey Road, Shirley, NY 11967, USA