

## Recombinant Human KRAS Protein, GST-tagged

Cat. No. KRAS-4888H Lot. No. (See product label)

### SPECIFICATION

<b>Product Overview</b>	Human KRAS full-length ORF ( AAH13572, 1 a.a. - 188 a.a.) recombinant protein with GST-tag at N-terminal.
<b>Species</b>	Human
<b>Source</b>	Wheat Germ
<b>Description</b>	This gene, a Kirsten ras oncogene homolog from the mammalian ras gene family, encodes a protein that is a member of the small GTPase superfamily. A single amino acid substitution is responsible for an activating mutation. The transforming protein that results is implicated in various malignancies, including lung adenocarcinoma, mucinous adenoma, ductal carcinoma of the pancreas and colorectal carcinoma. Alternative splicing leads to variants encoding two isoforms that differ in the C-terminal region. [provided by RefSeq]
<b>Molecular Mass</b>	46.42 kDa
<b>AA Sequence</b>	MTEYKLVVVGAGGVGKSALTIQLIQNHFVDEYDPTIEDSYRKQVVIDGETCLLDILDTA GHEEYSAMRDQYMRTGEGFLCVFAINNTKSFEDIHHYREQIKRVKDSVDVPMVLVG NKCDLPSRTVDTKQAQDLARSYGIPFIETSAKTRQGVDDAFYTLVREIRKHKEKMSK DGKKKKKKSKTKCVIM
<b>Applications</b>	Enzyme-linked Immunoabsorbent Assay Western Blot (Recombinant protein) Antibody Production

 Tel: 1-631-559-9269 1-516-512-3133

 Email: [info@creative-biomart.com](mailto:info@creative-biomart.com)  Fax: 1-631-938-8127

 45-1 Ramsey Road, Shirley, NY 11967, USA

Protein Array

<b>Notes</b>	Best use within three months from the date of receipt of this protein.
<b>Storage</b>	Store at -80 centigrade. Aliquot to avoid repeated freezing and thawing.
<b>Storage Buffer</b>	50 mM Tris-HCl, 10 mM reduced Glutathione, pH=8.0 in the elution buffer.

## GENE INFORMATION

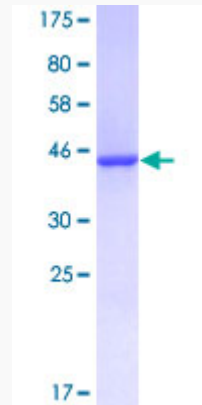
<b>Gene Name</b>	<a href="#">KRAS v-Ki-ras2 Kirsten rat sarcoma viral oncogene homolog [ Homo sapiens ]</a>
<b>Official Symbol</b>	<a href="#">KRAS</a>
<b>Synonyms</b>	KRAS; v-Ki-ras2 Kirsten rat sarcoma viral oncogene homolog; KRAS2, v Ki ras2 Kirsten rat sarcoma 2 viral oncogene homolog; GTPase KRas; KRAS1; K-Ras 2; c-Ki-ras; oncogene KRAS2; K-ras p21 protein; c-Kirsten-ras protein; PR310 c-K-ras oncogene; transforming protein p21; cellular c-Ki-ras2 proto-oncogene; v-Ki-ras2 Kirsten rat sarcoma 2 viral oncogene homolog; Kirsten rat sarcoma-2 viral (v-Ki-ras2) oncogene homolog; NS; NS3; KRAS2; RASK2; KI-RAS; C-K-RAS; K-RAS2A; K-RAS2B; K-RAS4A; K-RAS4B;
<b>Gene ID</b>	<a href="#">3845</a>
<b>mRNA Refseq</b>	<a href="#">NM_004985</a>
<b>Protein Refseq</b>	<a href="#">NP_004976</a>
<b>MIM</b>	<a href="#">190070</a>
<b>UniProt ID</b>	<a href="#">P01116</a>

 Tel: 1-631-559-9269 1-516-512-3133

 Email: [info@creative-biomart.com](mailto:info@creative-biomart.com)  Fax: 1-631-938-8127

 45-1 Ramsey Road, Shirley, NY 11967, USA

**Quality Control  
Testing**



12.5% SDS-PAGE Stained with Coomassie Blue

 Tel: 1-631-559-9269 1-516-512-3133

 Email: [info@creative-biomart.com](mailto:info@creative-biomart.com)  Fax: 1-631-938-8127

 45-1 Ramsey Road, Shirley, NY 11967, USA