

Recombinant Human KRAS Protein (G12R), GST-Tagged, GppNHp Loaded

Cat. No. KRAS-67H **Lot. No.** (See product label)

SPECIFICATION

Product Overview	Recombinant Human KRAS Protein (G12R) with GST tag, GppNHp Loaded was expressed in E. coli.
Species	Human
Source	E.coli
Description	This gene, a Kirsten ras oncogene homolog from the mammalian ras gene family, encodes a protein that is a member of the small GTPase superfamily. A single amino acid substitution is responsible for an activating mutation. The transforming protein that results is implicated in various malignancies, including lung adenocarcinoma, mucinous adenoma, ductal carcinoma of the pancreas and colorectal carcinoma. Alternative splicing leads to variants encoding two isoforms that differ in the C-terminal region.
Purity	> 95% by SDS-PAGE
Usage	Inhibitor Screening, binding assays, enzyme kinetics, and selectivity profiling.
Storage	Stable for 12 months at -80 centigrade, Avoid freeze/thaw cycles
Storage Buffer	20 mM HEPES pH 7.5, 50 mM NaCl, 10 mM MgCl, 1 mM DTT, 10% glycerol

GENE INFORMATION

 Tel: 1-631-559-9269 1-516-512-3133

 Email: info@creative-biomart.com  Fax: 1-631-938-8127

 45-1 Ramsey Road, Shirley, NY 11967, USA

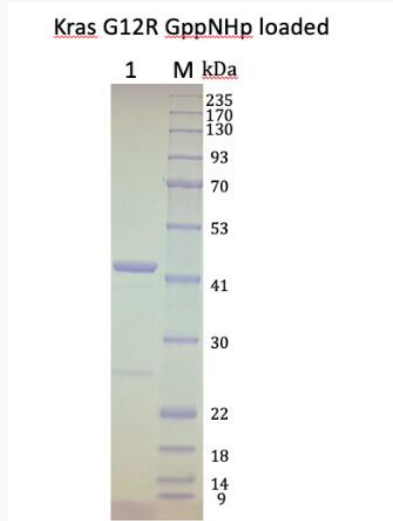
Gene Name	KRAS v-Ki-ras2 Kirsten rat sarcoma viral oncogene homolog [Homo sapiens (human)]
Official Symbol	KRAS
Synonyms	KRAS; v-Ki-ras2 Kirsten rat sarcoma viral oncogene homolog; KRAS2, v Ki ras2 Kirsten rat sarcoma 2 viral oncogene homolog; GTPase KRas; KRAS1; K-Ras 2; c-Ki-ras; oncogene KRAS2; K-ras p21 protein; c-Kirsten-ras protein; PR310 c-K-ras oncogene; transforming protein p21; cellular c-Ki-ras2 proto-oncogene; v-Ki-ras2 Kirsten rat sarcoma 2 viral oncogene homolog; Kirsten rat sarcoma-2 viral (v-Ki-ras2) oncogene homolog; NS; NS3; KRAS2; RASK2; KI-RAS; C-K-RAS; K-RAS2A; K-RAS2B; K-RAS4A; K-RAS4B;
Gene ID	3845
mRNA Refseq	NM_004985
Protein Refseq	NP_004976
MIM	190070
UniProt ID	P01116

 Tel: 1-631-559-9269 1-516-512-3133

 Email: info@creative-biomart.com  Fax: 1-631-938-8127

 45-1 Ramsey Road, Shirley, NY 11967, USA

SDS-PAGE



 Tel: 1-631-559-9269 1-516-512-3133

 Email: info@creative-biomart.com  Fax: 1-631-938-8127

 45-1 Ramsey Road, Shirley, NY 11967, USA