

# Recombinant Human KRAS Protein (G12V), GST-Tagged, GppNHp Loaded

**Cat. No.** KRAS-68H    **Lot. No.** (See product label)

## SPECIFICATION

<b>Product Overview</b>	Recombinant Human KRAS Protein (G12V) with GST tag, GppNHp Loaded was expressed in E. coli.
<b>Species</b>	Human
<b>Source</b>	E.coli
<b>Description</b>	This gene, a Kirsten ras oncogene homolog from the mammalian ras gene family, encodes a protein that is a member of the small GTPase superfamily. A single amino acid substitution is responsible for an activating mutation. The transforming protein that results is implicated in various malignancies, including lung adenocarcinoma, mucinous adenoma, ductal carcinoma of the pancreas and colorectal carcinoma. Alternative splicing leads to variants encoding two isoforms that differ in the C-terminal region.
<b>Molecular Mass</b>	46.05 kDa + GppNHp
<b>Purity</b>	> 95% by SDS-PAGE
<b>Usage</b>	Inhibitor Screening, binding assays, enzyme kinetics, and selectivity profiling.
<b>Storage</b>	Stable for 12 months at -80 centigrade, Avoid freeze/thaw cycles
<b>Storage Buffer</b>	20 mM HEPES pH 7.5, 50 mM NaCl, 10 mM MgCl, 1 mM DTT, 10% glycerol

 Tel: 1-631-559-9269    1-516-512-3133

 Email: [info@creative-biomart.com](mailto:info@creative-biomart.com)     Fax: 1-631-938-8127

 45-1 Ramsey Road, Shirley, NY 11967, USA

## GENE INFORMATION

**Gene Name** KRAS v-Ki-ras2 Kirsten rat sarcoma viral oncogene homolog [ Homo sapiens (human) ]

**Official Symbol** KRAS

**Synonyms** KRAS; v-Ki-ras2 Kirsten rat sarcoma viral oncogene homolog; KRAS2, v Ki ras2 Kirsten rat sarcoma 2 viral oncogene homolog; GTPase KRas; KRAS1; K-Ras 2; c-Ki-ras; oncogene KRAS2; K-ras p21 protein; c-Kirsten-ras protein; PR310 c-K-ras oncogene; transforming protein p21; cellular c-Ki-ras2 proto-oncogene; v-Ki-ras2 Kirsten rat sarcoma 2 viral oncogene homolog; Kirsten rat sarcoma-2 viral (v-Ki-ras2) oncogene homolog; NS; NS3; KRAS2; RASK2; KI-RAS; C-K-RAS; K-RAS2A; K-RAS2B; K-RAS4A; K-RAS4B;

**Gene ID** 3845

**mRNA Refseq** NM\_004985

**Protein Refseq** NP\_004976

**MIM** 190070

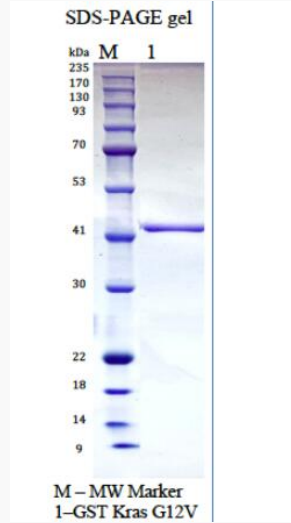
**UniProt ID** P01116

 Tel: 1-631-559-9269 1-516-512-3133

 Email: [info@creative-biomart.com](mailto:info@creative-biomart.com)  Fax: 1-631-938-8127

 45-1 Ramsey Road, Shirley, NY 11967, USA

**SDS-PAGE**



 Tel: 1-631-559-9269 1-516-512-3133

 Email: [info@creative-biomart.com](mailto:info@creative-biomart.com)  Fax: 1-631-938-8127

 45-1 Ramsey Road, Shirley, NY 11967, USA