

Recombinant Human KREMEN1 Protein, Myc/DDK-tagged, C13 and N15-labeled

Cat. No. KREMEN1-2847H **Lot. No.** (See product label)

SPECIFICATION

Product Overview	KREMEN1 MS Standard C13 and N15-labeled recombinant protein (NP_001034660) with a C-terminal MYC/DDK tag, was expressed in HEK293 cells.
Species	Human
Source	HEK293
Description	This gene encodes a high-affinity dickkopf homolog 1 (DKK1) transmembrane receptor that functionally cooperates with DKK1 to block wingless (WNT)/beta-catenin signaling. The encoded protein is a component of a membrane complex that modulates canonical WNT signaling through lipoprotein receptor-related protein 6 (LRP6). It contains extracellular kringle, WSC, and CUB domains. Alternatively spliced transcript variants encoding distinct isoforms have been observed for this gene.
Molecular Mass	50.18 kDa
AA Sequence	MAPPAARLALLSAAALTLAARPAPSPGLGPGPECFTANGADYRGTQNWTALQGGK PCLFWNETFQHPYNTLKYPNGEGGLGEHNYCRNPDGDVSPWCYVAEHEDGVYWK YCEIPACQMPGNLGCYKDHGNPPPLTGTSKTSNKLTIQTCISFCRSQRFKFAGMES GYACFCGNNPDYWKYGEAASTECNSVCFGDHTQPCGGDGRILFDLTVGACGGNY SAMSSVVYSPDFPDYATGRVCYWTIRVPGASHIHFSFPLFDIRDSADMVELLDGYT HRVLARFHGRSRPPLSFNVSLDFVILYFFSDRINQAQGFAVLYQAVKEELPQERPAV

 Tel: 1-631-559-9269 1-516-512-3133

 Email: info@creative-biomart.com  Fax: 1-631-938-8127

 45-1 Ramsey Road, Shirley, NY 11967, USA

NQTVAEVITEQANLSVSAARSSKVLVITTSPPHPPQTVPGWTVYGLATLLILTVTAIV
 AKILLHVTFKSHRVPASGDLRDCHQPGTSGEIWSIFYKPTSTSISIFKKKLGQSQDD
 RNPLVSDTRTRPLEQKLISEEDLAANDILDYKDDDDKV

Purity > 80% as determined by SDS-PAGE and Coomassie blue staining

Stability Stable for 3 months from receipt of products under proper storage and handling conditions.

Storage Store at -80 centigrade. Avoid repeated freeze-thaw cycles.

Concentration 50 µg/mL as determined by BCA

Storage Buffer 100 mM glycine, 25 mM Tris-HCl, pH 7.3.

GENE INFORMATION

Gene Name [KREMEN1](#) [kringle containing transmembrane protein 1 \[Homo sapiens \(human\) \]](#)

Official Symbol [KREMEN1](#)

Synonyms KREMEN1; kringle containing transmembrane protein 1; KREMEN, kringle containing transmembrane protein; kremen protein 1; KRM1; dickkopf receptor; kringle-coding gene marking the eye and the nose; kringle domain-containing transmembrane protein 1; kringle-containing protein marking the eye and the nose; KREMEN; FLJ31863;

Gene ID [83999](#)

mRNA Refseq [NM_001039571](#)

 Tel: 1-631-559-9269 1-516-512-3133

 Email: info@creative-biomart.com  Fax: 1-631-938-8127

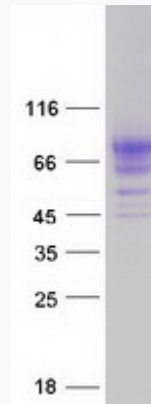
 45-1 Ramsey Road, Shirley, NY 11967, USA

Protein Refseq NP_001034660

MIM 609898

UniProt ID Q96MU8

SDS-PAGE



 Tel: 1-631-559-9269 1-516-512-3133

 Email: info@creative-biomart.com  Fax: 1-631-938-8127

 45-1 Ramsey Road, Shirley, NY 11967, USA