

Recombinant Human KREMEN1 Protein, GST-tagged

Cat. No. KREMEN1-4883H Lot. No. (See product label)

SPECIFICATION

Product Overview	Human KREMEN1 partial ORF (NP_114434, 310 a.a. - 391 a.a.) recombinant protein with GST-tag at N-terminal.
Species	Human
Source	Wheat Germ
Description	This gene encodes a high-affinity dickkopf homolog 1 (DKK1) transmembrane receptor that functionally cooperates with DKK1 to block wntless (WNT)/beta-catenin signaling. The encoded protein is a component of a membrane complex that modulates canonical WNT signaling through lipoprotein receptor-related protein 6 (LRP6). It contains extracellular kringle, WSC, and CUB domains. Alternatively spliced transcript variants encoding distinct isoforms have been observed for this gene. [provided by RefSeq]
Molecular Mass	34.76 kDa
AA Sequence	INQAQGFAVLYQAVKEELPQERP AVNQTVAEVITEQANLSVSAARSSKVLVITTSPPS HPPQTVPGSNSWAPPMGAGSHRVE
Applications	Enzyme-linked Immunoabsorbent Assay Western Blot (Recombinant protein) Antibody Production Protein Array

 Tel: 1-631-559-9269 1-516-512-3133

 Email: info@creative-biomart.com  Fax: 1-631-938-8127

 45-1 Ramsey Road, Shirley, NY 11967, USA

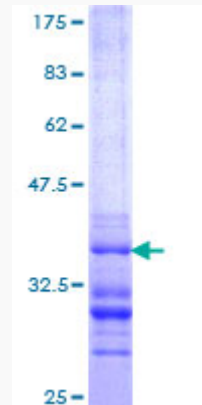
Notes	Best use within three months from the date of receipt of this protein.
Storage	Store at -80 centigrade. Aliquot to avoid repeated freezing and thawing.
Storage Buffer	50 mM Tris-HCl, 10 mM reduced Glutathione, pH=8.0 in the elution buffer.
GENE INFORMATION	
Gene Name	KREMEN1 kringle containing transmembrane protein 1 [Homo sapiens]
Official Symbol	KREMEN1
Synonyms	KREMEN1; kringle containing transmembrane protein 1; KREMEN, kringle containing transmembrane protein; kremen protein 1; KRM1; dickkopf receptor; kringle-coding gene marking the eye and the nose; kringle domain-containing transmembrane protein 1; kringle-containing protein marking the eye and the nose; KREMEN; FLJ31863;
Gene ID	83999
mRNA Refseq	NM_001039570
Protein Refseq	NP_001034659
MIM	609898
UniProt ID	Q96MU8

 Tel: 1-631-559-9269 1-516-512-3133

 Email: info@creative-biomart.com  Fax: 1-631-938-8127

 45-1 Ramsey Road, Shirley, NY 11967, USA

**Quality Control
Testing**



12.5% SDS-PAGE Stained with Coomassie Blue

 Tel: 1-631-559-9269 1-516-512-3133

 Email: info@creative-biomart.com  Fax: 1-631-938-8127

 45-1 Ramsey Road, Shirley, NY 11967, USA