

Recombinant Human KREMEN1 Protein (Lys157-Gly390), N-His tagged

Cat. No. KREMEN1-5208H Lot. No. (See product label)

SPECIFICATION

Product Overview	Recombinant human KREMEN1 (Lys157-Gly390) fused with the N-His tag was expressed in E. coli.
Species	Human
Source	E.coli
ProteinLength	Lys157-Gly390
Form	Lyophilized powder/frozen liquid
Molecular Mass	27.86 kDa
Purity	>90% as determined by SDS-PAGE.
Notes	For research use only.
Storage	Use a manual defrost freezer and avoid repeated freeze thaw cycles. Store at 2 to 8 centigrade for one week. Store at -20 to -80 centigrade for twelve months from the date of receipt.
Storage Buffer	0.01M PBS, pH 7.4, 0.02% NLS
Reconstitution	Reconstitute in sterile water for a stock solution.

 Tel: 1-631-559-9269 1-516-512-3133

 Email: info@creative-biomart.com  Fax: 1-631-938-8127

 45-1 Ramsey Road, Shirley, NY 11967, USA

Shipping

They are shipped out with dry ice/blue ice unless customers require otherwise.

GENE INFORMATION
Gene Name

KREMEN1 kringle containing transmembrane protein 1 [Homo sapiens (human)]

Official Symbol

KREMEN1

Synonyms

KREMEN1; kringle containing transmembrane protein 1; KREMEN, kringle containing transmembrane protein; kremen protein 1; KRM1; dickkopf receptor; kringle-coding gene marking the eye and the nose; kringle domain-containing transmembrane protein 1; kringle-containing protein marking the eye and the nose; KREMEN; FLJ31863;

Gene ID

83999

mRNA Refseq

NM_001039570

Protein Refseq

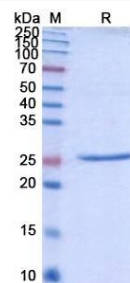
NP_001034659

MIM

609898

UniProt ID

Q96MU8

SDS-PAGE


 Tel: 1-631-559-9269 1-516-512-3133

 Email: info@creative-biomart.com  Fax: 1-631-938-8127

 45-1 Ramsey Road, Shirley, NY 11967, USA