

Recombinant Human KREMEN2 Protein, GST-tagged

Cat. No. KREMEN2-4882H Lot. No. (See product label)

SPECIFICATION

Product Overview	Human KREMEN2 full-length ORF (NP_078783.1, 1 a.a. - 420 a.a.) recombinant protein with GST-tag at N-terminal.
Species	Human
Source	Wheat Germ
Description	This gene encodes a high-affinity dickkopf homolog 1 (DKK1) transmembrane receptor that functionally cooperates with DKK1 to block wntless (WNT)/beta-catenin signaling. The encoded protein forms a ternary membrane complex with DKK1 and the WNT receptor lipoprotein receptor-related protein 6 (LRP6), and induces rapid endocytosis and removal of LRP6 from the plasma membrane. It contains extracellular kringle, WSC, and CUB domains. Alternatively spliced transcript variants encoding distinct isoforms have been observed for this gene. [provided by RefSeq]
Molecular Mass	70.8 kDa
AA Sequence	MGTQALQGFLFLLFLLQPRGASAGSLHSPGLSECFQVNGADYRGHQNRTGPRG AGRPCLFWDQTTQHSYSSASDPHGRWGLGAHNFCRNPDGDVQPWCYVAETEEGI YWRYCDIPSCHMPGYLGCFVDSGAPPALSGPSGTSTKLTQVCLRFCRMKGYQLA GVEAGYACFCGSESDLARGRLAPATDCDQICFGHPGQLCGGDGRLGVYEVSVGSC QGNWTAPQGVIIYSPDFPDEYGPDRNCSWALGPPGAALELTFRLFELADPRDRLELR DAASGSLLRAFD GARPPPSGPLRLGTAALLLTFRSDARGHAQG FALTYRGLQDAAE DPEAPEGSAQTPAAPLDGANVSCSPRPGAPPAAIGGAVCWLREKGP RRWGLPGAP

 Tel: 1-631-559-9269 1-516-512-3133

 Email: info@creative-biomart.com  Fax: 1-631-938-8127

 45-1 Ramsey Road, Shirley, NY 11967, USA

GEAGLCGTNSPEGWPCPAPPGTPRLRVLPRATGL

Applications

Enzyme-linked Immunoabsorbent Assay
 Western Blot (Recombinant protein)
 Antibody Production
 Protein Array

Notes

Best use within three months from the date of receipt of this protein.

Storage

Store at -80 centigrade. Aliquot to avoid repeated freezing and thawing.

Storage Buffer

50 mM Tris-HCl, 10 mM reduced Glutathione, pH=8.0 in the elution buffer.

GENE INFORMATION

Gene Name

[KREMEN2](#) [kringle containing transmembrane protein 2 \[Homo sapiens \]](#)

Official Symbol

[KREMEN2](#)

Synonyms

KREMEN2; kringle containing transmembrane protein 2; kremen protein 2; KRM2; MGC10791; dickkopf receptor 2; kringle domain-containing transmembrane protein 2; kringle-containing protein marking the eye and the nose; MGC16709;

Gene ID

[79412](#)

mRNA Refseq

[NM_001253725](#)

Protein Refseq

[NP_001240654](#)

MIM

[609899](#)

 Tel: 1-631-559-9269 1-516-512-3133

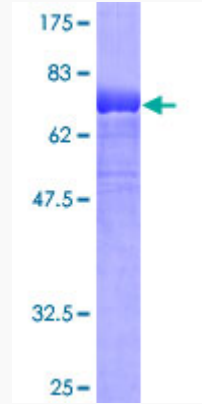
 Email: info@creative-biomart.com  Fax: 1-631-938-8127

 45-1 Ramsey Road, Shirley, NY 11967, USA

UniProt ID

Q8NCW0

Quality Control
Testing



12.5% SDS-PAGE Stained with Coomassie Blue

 Tel: 1-631-559-9269 1-516-512-3133

 Email: info@creative-biomart.com  Fax: 1-631-938-8127

 45-1 Ramsey Road, Shirley, NY 11967, USA