

Recombinant Human KRIT1 Protein, GST-tagged

Cat. No. KRIT1-4879H **Lot. No.** (See product label)

SPECIFICATION

Product Overview	Human KRIT1 full-length ORF (NP_004903.2, 1 a.a. - 736 a.a.) recombinant protein with GST-tag at N-terminal.
Species	Human
Source	Wheat Germ
Description	This gene encodes a protein containing four ankyrin repeats, a band 4.1/ezrin/radixin/moesin (FERM) domain, and multiple NPXY sequences. The encoded protein is localized in the nucleus and cytoplasm. It binds to integrin cytoplasmic domain-associated protein-1 alpha (ICAP1alpha), and plays a critical role in beta1-integrin-mediated cell proliferation. It associates with junction proteins and RAS-related protein 1A (Rap1A), which requires the encoded protein for maintaining the integrity of endothelial junctions. It is also a microtubule-associated protein and may play a role in microtubule targeting. Mutations in this gene result in cerebral cavernous malformations. Multiple alternatively spliced transcript variants have been found for this gene. [provided by RefSeq]
Molecular Mass	110.7 kDa
AA Sequence	MGNPENIEDAYVAVIRPKNTASLNSREYRAKSYEILLHEVPIEGQKKKRKKVLLLETKL QGNSEITQGILDYVVETTKPISPANQGIRGKRVLMLKKFPLDGEKMGREASLFIVPSV VKDNTKYTYTPGCPIFYCLQDIMRVCSESSHFATLTARMLIALDKWLDERHAQSHFI PALFRPSPLERIKTNVINPAYATESGQTENSLHMGYSALEIKSKMLALEKADTCIYNPL

 Tel: 1-631-559-9269 1-516-512-3133

 Email: info@creative-biomart.com  Fax: 1-631-938-8127

 45-1 Ramsey Road, Shirley, NY 11967, USA

FGSDLQYTNRVDKVVINPYFGLGAPDYSKIQIPKQEKWQRSMSSVTEDKERQWVDD
 FPLHRSACEGDSELLSRLLSERFSVNQLDSHWAPIHYACWYGKVEATRILLEKGKC
 NPNLLNGQLSSPLHFAAGGGHAEIVQILLNHPETDRHITDQQGRSPLNICEENKQNN
 WEEAAKLLKEAINKPYEKVRIYRMDGSYRSVELKHGNNTTVQQIMEGMRLSQETQQ
 YFTIWICSENLSLQLKPYHKPLQHVRDWPEILAEELNDPQRETPQLFLRRDVRLPLE
 VEKQIEDPLAILILFDEARYNLLKGFYTAPDAKLITLASLLLQIVYGNYESKKHKQGFLN
 EENLKSIVPVTKLKSKAPHWTNRILHEYKNLSTSEGVSKEMHHLQRMFLQNCWEIPT
 YGAAFFTQGITKASPSNHKVIPVYVGVNIKGLHLLNMETKALLISLKYGCFMWQLGD
 TDTCFQIHSMENKMSFIVHTKQAGLVVKLLMKLNGQLMPTERN

Applications
 Enzyme-linked Immunoabsorbent Assay
 Western Blot (Recombinant protein)
 Antibody Production
 Protein Array

Notes
 Best use within three months from the date of receipt of this protein.

Storage
 Store at -80 centigrade. Aliquot to avoid repeated freezing and thawing.

Storage Buffer
 50 mM Tris-HCl, 10 mM reduced Glutathione, pH=8.0 in the elution buffer.

GENE INFORMATION

Gene Name
 KRIT1 KRIT1, ankyrin repeat containing [Homo sapiens]

Official Symbol
 KRIT1

Synonyms
 KRIT1; KRIT1, ankyrin repeat containing; CCM1, cerebral cavernous malformations 1; krev interaction trapped protein 1; CAM; krev interaction trapped 1; ankyrin repeat-containing protein Krit1; cerebral cavernous malformations 1 protein; CCM1;

 Tel: 1-631-559-9269 1-516-512-3133

 Email: info@creative-biomart.com  Fax: 1-631-938-8127

 45-1 Ramsey Road, Shirley, NY 11967, USA

Gene ID 889

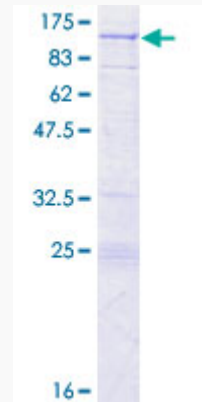
mRNA Refseq NM_001013406

Protein Refseq NP_001013424

MIM 604214

UniProt ID O00522

Quality Control
Testing



12.5% SDS-PAGE Stained with Coomassie Blue

Tel: 1-631-559-9269 1-516-512-3133

Email: info@creative-biomart.com Fax: 1-631-938-8127

45-1 Ramsey Road, Shirley, NY 11967, USA