

Recombinant Human KRR1 Protein, GST-tagged

Cat. No. KRR1-4877H Lot. No. (See product label)

SPECIFICATION

Product Overview	Human KRR1 full-length ORF (AAH26107.1, 1 a.a. - 381 a.a.) recombinant protein with GST-tag at N-terminal.
Species	Human
Source	Wheat Germ
Description	KRR1 (KRR1, Small Subunit Processome Component Homolog) is a Protein Coding gene. Diseases associated with KRR1 include Hiv-1. Among its related pathways are rRNA processing in the nucleus and cytosol and Gene Expression. GO annotations related to this gene include nucleic acid binding and RNA binding.
Molecular Mass	70 kDa
AA Sequence	MASPSLERPEKGAGKSEFRNQKPKPENQDESELLTVPDGWKEPAFSKEDNPRGLL EESFATLFPKYREAYLKECWPLVQKALNEHHVNATLDLIEGSMTVCTTKKTFDPYIII RARDLIKLLARSVSFEQAVRILQDDVACDIKIGSLVRNKERFVKRRQRLIGPKGSTLK ALELLTNCYIMVQGNTVSAIGPFSGLKEVRKVALDTMKNIHPIYNIKSLMIKRELAKDS ELRSQSWERFLPQFKHKNVNKRKEPKKKTVKKEYTPFPPQPESQIDKELASGEYF LKANQKKRQKMEAIKAKQAEAIKSRQEERNKAFIPPKEKPIVKPKEASTETKIDVASIK EKVKKAKNKKLGALTAEEIALKMEADEKKKKKKK
Applications	Enzyme-linked Immunoabsorbent Assay Western Blot (Recombinant protein) Antibody Production

 Tel: 1-631-559-9269 1-516-512-3133

 Email: info@creative-biomart.com  Fax: 1-631-938-8127

 45-1 Ramsey Road, Shirley, NY 11967, USA

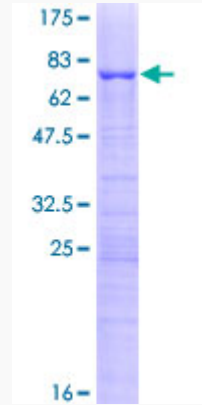
	Protein Array
Notes	Best use within three months from the date of receipt of this protein.
Storage	Store at -80 centigrade. Aliquot to avoid repeated freezing and thawing.
Storage Buffer	50 mM Tris-HCl, 10 mM reduced Glutathione, pH=8.0 in the elution buffer.
GENE INFORMATION	
Gene Name	KRR1 KRR1, small subunit (SSU) processome component, homolog (yeast) [Homo sapiens]
Official Symbol	KRR1
Synonyms	KRR1; KRR1, small subunit (SSU) processome component, homolog (yeast); HIV 1 Rev binding protein 2 , HIV 1 rev binding protein 2 , HRB2; KRR1 small subunit processome component homolog; RIP 1; Rev interacting protein; rev-interacting protein 1; HIV-1 Rev binding protein 2; HIV-1 Rev-binding protein 2; KRR-R motif-containing protein 1; HRB2; RIP-1;
Gene ID	11103
mRNA Refseq	NM_007043
Protein Refseq	NP_008974
MIM	612817
UniProt ID	Q13601

 Tel: 1-631-559-9269 1-516-512-3133

 Email: info@creative-biomart.com  Fax: 1-631-938-8127

 45-1 Ramsey Road, Shirley, NY 11967, USA

**Quality Control
Testing**



12.5% SDS-PAGE Stained with Coomassie Blue

 Tel: 1-631-559-9269 1-516-512-3133

 Email: info@creative-biomart.com  Fax: 1-631-938-8127

 45-1 Ramsey Road, Shirley, NY 11967, USA