

Recombinant Human KRT1 Protein (Glu370-Glu489), N-His tagged

Cat. No. KRT1-4379H Lot. No. (See product label)

SPECIFICATION

Product Overview	Recombinant human KRT1 (Glu370-Glu489) fused with the N-His tag was expressed in E. coli.
Species	Human
Source	E.coli
ProteinLength	Glu370-Glu489
Form	Lyophilized powder/frozen liquid
Molecular Mass	16.14 kDa
Purity	>90% as determined by SDS-PAGE.
Notes	For research use only.
Storage	Use a manual defrost freezer and avoid repeated freeze thaw cycles. Store at 2 to 8 centigrade for one week. Store at -20 to -80 centigrade for twelve months from the date of receipt.
Storage Buffer	0.01M PBS, pH 7.4, 0.02% NLS
Reconstitution	Reconstitute in sterile water for a stock solution.

 Tel: 1-631-559-9269 1-516-512-3133

 Email: info@creative-biomart.com  Fax: 1-631-938-8127

 45-1 Ramsey Road, Shirley, NY 11967, USA

Shipping They are shipped out with dry ice/blue ice unless customers require otherwise.

GENE INFORMATION

Gene Name KRT1 keratin 1 [Homo sapiens (human)]

Official Symbol KRT1

Synonyms KRT1; keratin 1; EHK1, epidermolytic hyperkeratosis 1; keratin, type II cytoskeletal 1; KRT1A; CK-1; cytokeratin 1; cytokeratin-1; 67 kDa cytokeratin; hair alpha protein; type-II keratin Kb1; epidermolytic hyperkeratosis 1; K1; CK1; EHK; EHK1; EPPK; NEPPK;

Gene ID 3848

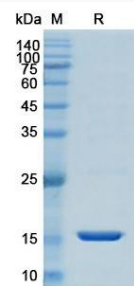
mRNA Refseq NM_006121

Protein Refseq NP_006112

MIM 139350

UniProt ID P04264

SDS-PAGE



 Tel: 1-631-559-9269 1-516-512-3133

 Email: info@creative-biomart.com  Fax: 1-631-938-8127

 45-1 Ramsey Road, Shirley, NY 11967, USA