

Recombinant Human KRT1 Protein, GST-tagged

Cat. No. KRT1-4876H **Lot. No.** (See product label)

SPECIFICATION

Product Overview	Human KRT1 partial ORF (NP_006112, 387 a.a. - 496 a.a.) recombinant protein with GST-tag at N-terminal.
Species	Human
Source	Wheat Germ
Description	The protein encoded by this gene is a member of the keratin gene family. The type II cytokeratins consist of basic or neutral proteins which are arranged in pairs of heterotypic keratin chains coexpressed during differentiation of simple and stratified epithelial tissues. This type II cytokeratin is specifically expressed in the spinous and granular layers of the epidermis with family member KRT10 and mutations in these genes have been associated with bullous congenital ichthyosiform erythroderma. The type II cytokeratins are clustered in a region of chromosome 12q12-q13. [provided by RefSeq]
Molecular Mass	37.84 kDa
AA Sequence	HGDSVRNSKIEISELNRVIQRLRSEIDNVKKQISNLQQSISDAEQRGENALKDAKNKL NDLEDALQQAKEDLARLLRDYQELMNTKLALDLEIATYRTLLEGEESRMSGE
Applications	Enzyme-linked Immunoabsorbent Assay Western Blot (Recombinant protein) Antibody Production Protein Array

 Tel: 1-631-559-9269 1-516-512-3133

 Email: info@creative-biomart.com  Fax: 1-631-938-8127

 45-1 Ramsey Road, Shirley, NY 11967, USA

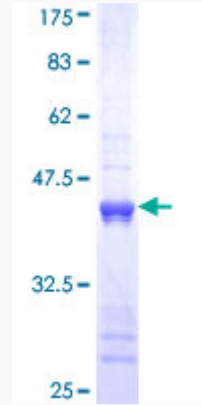
Notes	Best use within three months from the date of receipt of this protein.
Storage	Store at -80 centigrade. Aliquot to avoid repeated freezing and thawing.
Storage Buffer	50 mM Tris-HCl, 10 mM reduced Glutathione, pH=8.0 in the elution buffer.
GENE INFORMATION	
Gene Name	KRT1 keratin 1 [Homo sapiens]
Official Symbol	KRT1
Synonyms	KRT1; keratin 1; EHK1, epidermolytic hyperkeratosis 1; keratin, type II cytoskeletal 1; KRT1A; CK-1; cytokeratin 1; cytokeratin-1; 67 kDa cytokeratin; hair alpha protein; type-II keratin Kb1; epidermolytic hyperkeratosis 1; K1; CK1; EHK; EHK1; EPPK; NEPPK;
Gene ID	3848
mRNA Refseq	NM_006121
Protein Refseq	NP_006112
MIM	139350
UniProt ID	P04264

 Tel: 1-631-559-9269 1-516-512-3133

 Email: info@creative-biomart.com  Fax: 1-631-938-8127

 45-1 Ramsey Road, Shirley, NY 11967, USA

**Quality Control
Testing**



12.5% SDS-PAGE Stained with Coomassie Blue

 Tel: 1-631-559-9269 1-516-512-3133

 Email: info@creative-biomart.com  Fax: 1-631-938-8127

 45-1 Ramsey Road, Shirley, NY 11967, USA