

Recombinant Human KRT10 protein, His-tagged

Cat. No. KRT10-010H **Lot. No.** (See product label)

SPECIFICATION

Product Overview	Recombinant Human KRT10 (Leu153~Glu456) was expressed in E. coli with N-terminal His Tag.
Species	Human
Source	E.coli
ProteinLength	153-456 a.a.
Description	This gene encodes a member of the type I (acidic) cytokeratin family, which belongs to the superfamily of intermediate filament (IF) proteins. Keratins are heteropolymeric structural proteins which form the intermediate filament. These filaments, along with actin microfilaments and microtubules, compose the cytoskeleton of epithelial cells. Mutations in this gene are associated with epidermolytic hyperkeratosis. This gene is located within a cluster of keratin family members on chromosome 17q21.
Form	PBS, pH7.4, containing 0.01% SKL, 1mM DTT, 5% Trehalose and Proclin300.
Molecular Mass	36.6kDa
Endotoxin	< 1.0EU per 1µg (determined by the LAL method)
Purity	> 97% as determined by SDS-PAGE and Coomassie blue staining
Stability	The thermal stability is described by the loss rate. The loss rate was determined by

 Tel: 1-631-559-9269 1-516-512-3133

 Email: info@creative-biomart.com  Fax: 1-631-938-8127

 45-1 Ramsey Road, Shirley, NY 11967, USA

accelerated thermal degradation test, that is, incubate the protein at 37 °C for 48h, and no obvious degradation and precipitation were observed. The loss rate is less than 5% within the expiration date under appropriate storage condition.

Storage Store at 2-8 °C for one month. Aliquot and store at -80 °C for 12 months.

Reconstitution Reconstitute in PBS (pH7.4) to a concentration of 0.1-1.0 mg/mL. Do not vortex.

GENE INFORMATION

Gene Name KRT10 keratin 10 [Homo sapiens (human)]

Official Symbol KRT10

Synonyms BIE; EHK; K10; KPP; BCIE; CK10

Gene ID 3858

mRNA Refseq NM_000421.3

Protein Refseq NP_000412.3

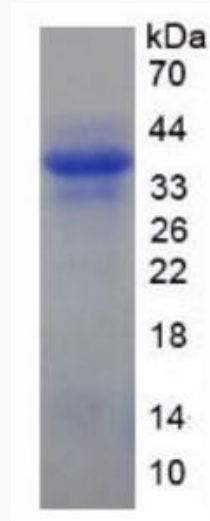
MIM 148080

UniProt ID P13645

 Tel: 1-631-559-9269 1-516-512-3133

 Email: info@creative-biomart.com  Fax: 1-631-938-8127

 45-1 Ramsey Road, Shirley, NY 11967, USA



 Tel: 1-631-559-9269 1-516-512-3133

 Email: info@creative-biomart.com  Fax: 1-631-938-8127

 45-1 Ramsey Road, Shirley, NY 11967, USA