

Recombinant Human KRT10 Protein (326-443 aa), His-tagged

Cat. No. KRT10-1436H **Lot. No.** (See product label)

SPECIFICATION

Product Overview	Recombinant Human KRT10 Protein (326-443 aa) is produced by Yeast expression system. This protein is fused with a 6xHis tag at the N-terminal. Research Area: Signal Transduction. Protein Description: Partial.
Species	Human
Source	Yeast
ProteinLength	326-443 aa
Form	Tris-based buffer,50% glycerol
Molecular Mass	15.7 kDa
AA Sequence	EQLAEQNRKDAAEAWFNEKSKELTTEIDNNEIQISSYKSEITELRRNVQALEIELQSQLA LKQSLEASLAETEGRYCVQLSQIQAQISALEEQLQQIRAETECQNTEYQQLLDIKIRLE
Purity	> 90% as determined by SDS-PAGE.
Notes	Repeated freezing and thawing is not recommended. Store working aliquots at 4 centigrade for up to one week.
Storage	The shelf life is related to many factors, storage state, buffer ingredients, storage temperature and the stability of the protein itself. Generally, the shelf life of liquid form is 6 months at -20 centigrade/-80 centigrade. The shelf life of lyophilized form is 12

 Tel: 1-631-559-9269 1-516-512-3133

 Email: info@creative-biomart.com  Fax: 1-631-938-8127

 45-1 Ramsey Road, Shirley, NY 11967, USA

months at -20 centigrade/-80 centigrade.

Concentration A hardcopy of COA with reconstitution instruction is sent along with the products.

GENE INFORMATION

Gene Name KRT10 keratin 10 [Homo sapiens]

Official Symbol KRT10

Synonyms KRT10; keratin 10; CK10; cytokeratin 10; K10; CK-10; keratin-10; BIE; EHK; KPP; BCIE;

Gene ID 3858

mRNA Refseq NM_000421

Protein Refseq NP_000412

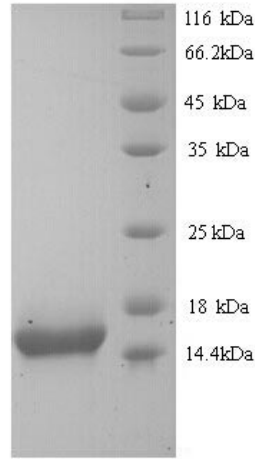
MIM 148080

UniProt ID P13645

 Tel: 1-631-559-9269 1-516-512-3133

 Email: info@creative-biomart.com  Fax: 1-631-938-8127

 45-1 Ramsey Road, Shirley, NY 11967, USA



(Tris-Glycine gel) Discontinuous SDS-PAGE (reduced) with 5% enrichment gel and 15% separation gel.

 Tel: 1-631-559-9269 1-516-512-3133

 Email: info@creative-biomart.com  Fax: 1-631-938-8127

 45-1 Ramsey Road, Shirley, NY 11967, USA