

Recombinant Human KRT10 Protein, GST-tagged

Cat. No. KRT10-4875H **Lot. No.** (See product label)

SPECIFICATION

Product Overview	Human KRT10 partial ORF (NP_000412, 345 a.a. - 454 a.a.) recombinant protein with GST-tag at N-terminal.
Species	Human
Source	Wheat Germ
Description	This gene encodes a member of the type I (acidic) cytokeratin family, which belongs to the superfamily of intermediate filament (IF) proteins. Keratins are heteropolymeric structural proteins which form the intermediate filament. These filaments, along with actin microfilaments and microtubules, compose the cytoskeleton of epithelial cells. Mutations in this gene are associated with epidermolytic hyperkeratosis. This gene is located within a cluster of keratin family members on chromosome 17q21. [provided by RefSeq]
Molecular Mass	37.84 kDa
AA Sequence	KELTTEIDNNIEQISSYKSEITELRRNVQALEIELQSQLALKQSLEASLAETEGRYCVQ LSQIQAQISALEEQLQQIRAETECQNTEYQQLLDIKIRLENEIQTYSLLE
Applications	Enzyme-linked Immunoabsorbent Assay Western Blot (Recombinant protein) Antibody Production Protein Array

 Tel: 1-631-559-9269 1-516-512-3133

 Email: info@creative-biomart.com  Fax: 1-631-938-8127

 45-1 Ramsey Road, Shirley, NY 11967, USA

Notes	Best use within three months from the date of receipt of this protein.
Storage	Store at -80 centigrade. Aliquot to avoid repeated freezing and thawing.
Storage Buffer	50 mM Tris-HCl, 10 mM reduced Glutathione, pH=8.0 in the elution buffer.

GENE INFORMATION

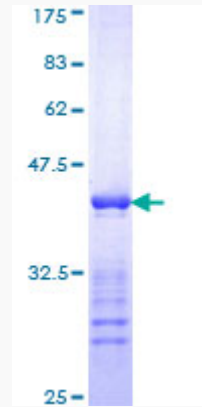
Gene Name	KRT10 keratin 10 [Homo sapiens]
Official Symbol	KRT10
Synonyms	KRT10; keratin 10; keratosis palmaris et plantaris , KPP; keratin, type I cytoskeletal 10; CK10; cytokeratin 10; epidermolytic hyperkeratosis; K10; CK-10; keratin-10; BIE; EHK; KPP; BCIE;
Gene ID	3858
mRNA Refseq	NM_000421
Protein Refseq	NP_000412
MIM	148080
UniProt ID	P13645

 Tel: 1-631-559-9269 1-516-512-3133

 Email: info@creative-biomart.com  Fax: 1-631-938-8127

 45-1 Ramsey Road, Shirley, NY 11967, USA

**Quality Control
Testing**



12.5% SDS-PAGE Stained with Coomassie Blue

 Tel: 1-631-559-9269 1-516-512-3133

 Email: info@creative-biomart.com  Fax: 1-631-938-8127

 45-1 Ramsey Road, Shirley, NY 11967, USA