

Recombinant Human KRT12 Protein, Myc/DDK-tagged, C13 and N15-labeled

Cat. No. KRT12-1066H **Lot. No.** (See product label)

SPECIFICATION

Product Overview	KRT12 MS Standard C13 and N15-labeled recombinant protein (NP_000214) with a C-terminal MYC/DDK tag, was expressed in HEK293 cells.
Species	Human
Source	HEK293
Description	KRT12 encodes the type I intermediate filament chain keratin 12, expressed in corneal epithelia. Mutations in this gene lead to Meesmann corneal dystrophy.
Molecular Mass	53.3 kDa
AA Sequence	<p>MDLSNNTMSLSVRTPGLSRRLSSQSVIGRPRGMSASSVSGSYGGSAFGFGASC GG GFS AASMF GSSSGFGGGSGSSMAGGLGAGYGRALGGGSFGGLGMGFGGSPGGG SLGILSGNDGGLLSGSEKETMQNLNDR LASYLDKVRALEEANTELENKIREWYETRG TGTADASQSDYSKYYP LIEDLRNKIISASIGNAQLLLQIDNARLAAEDFRMKYENELAL RQGVEADINGLRRVLDLTLTRTDLEMQIESLNEELAYMKNHEDELQSFRVGGPG EVSVEMDAAPGVDLTRLLNDMRAQYETIAEQNRKDAEAWFIEKSGELRKEISTNTEQ LQSSKSEVTDLRRAFQNLEIELQSQLAMKKSLEDSLAEAGDYCAQLSQVQQLISNL EAQLLQVRADAERQNV DHQRLLNVKARLELEIETYRLLDGEAQDGLLEESLFVTDS KSQAQSTDSSKDPTKTRKIKTVVQEMVNGEVVSSQVQEIEELMTRTRPLEQKLISEE DLAANDILDYKDDDDKV</p>
Purity	> 80% as determined by SDS-PAGE and Coomassie blue staining

 Tel: 1-631-559-9269 1-516-512-3133

 Email: info@creative-biomart.com  Fax: 1-631-938-8127

 45-1 Ramsey Road, Shirley, NY 11967, USA



Stability	Stable for 3 months from receipt of products under proper storage and handling conditions.
Storage	Store at -80 centigrade. Avoid repeated freeze-thaw cycles.
Concentration	50 µg/mL as determined by BCA
Storage Buffer	100 mM glycine, 25 mM Tris-HCl, pH 7.3.

GENE INFORMATION

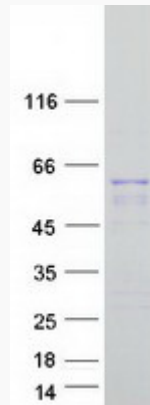
Gene Name	KRT12 keratin 12 [Homo sapiens (human)]
Official Symbol	KRT12
Synonyms	KRT12; keratin 12; keratin, type I cytoskeletal 12; K12; Meesmann corneal dystrophy; CK-12; keratin-12; cytokeratin-12;
Gene ID	3859
mRNA Refseq	NM_000223
Protein Refseq	NP_000214
MIM	601687
UniProt ID	Q99456

Tel: 1-631-559-9269 1-516-512-3133

Email: info@creative-biomart.com Fax: 1-631-938-8127

45-1 Ramsey Road, Shirley, NY 11967, USA

SDS-PAGE



 Tel: 1-631-559-9269 1-516-512-3133

 Email: info@creative-biomart.com  Fax: 1-631-938-8127

 45-1 Ramsey Road, Shirley, NY 11967, USA