

Recombinant Human KRT12 Protein, GST-tagged

Cat. No. KRT12-4874H Lot. No. (See product label)

SPECIFICATION

Product Overview	Human KRT12 full-length ORF (AAI56642.1, 1 a.a. - 494 a.a.) recombinant protein with GST tag at N-terminal.
Species	Human
Source	Wheat Germ
Description	KRT12 encodes the type I intermediate filament chain keratin 12, expressed in corneal epithelia. Mutations in this gene lead to Meesmann corneal dystrophy. [provided by RefSeq]
Molecular Mass	80.74 kDa
AA Sequence	<p>MDLSNNTMSLSVRTPGLSRRLSSQSVIGRPRGMSASSVSGSYGGSAFGFGASC GG GFSAA SMFGSSSGFGGGSGSSMAGGLGAGYGRALGGGSFGGLGMGFGGSPGGG SLGILSGNDGGLLSGSEKETMQNLNDR LASYLDKVRALEEANTELENKIREWYETRG TGTADASQSDYSKYYP LIEDLRNKIISASIGNAQLLLQIDNARLAAEDFRMKYENELAL RQGVEADINGLRRVLDLTLTRTDLEMQIESLNEELAYMKNHEDELQSFRVGGPG EVSVEMDAAPGVDLTRLLNDMRAQYETIAEQNRKDAEAWFIEKSGELRKEISTNTEQ LQSSKSEVTDLRRAFQNLEIELQSQLAMKKSLEDSLAEAEAGDYCAQLSQVQQLISNL EAQLLQVRADAERQNV DHQRLLNVKARLELEIETYRRLLDGEAQDGLLEESLFVTDS KSQAQSTDSSKDPTKTRKIKTVVQEMVNGEVVSSQVQEIEELM</p>
Applications	Enzyme-linked Immunoabsorbent Assay Western Blot (Recombinant protein)

 Tel: 1-631-559-9269 1-516-512-3133

 Email: info@creative-biomart.com  Fax: 1-631-938-8127

 45-1 Ramsey Road, Shirley, NY 11967, USA



	Antibody Production Protein Array
Notes	Best use within three months from the date of receipt of this protein.
Storage	Store at -80 centigrade. Aliquot to avoid repeated freezing and thawing.
Storage Buffer	50 mM Tris-HCl, 10 mM reduced Glutathione, pH=8.0 in the elution buffer.

GENE INFORMATION

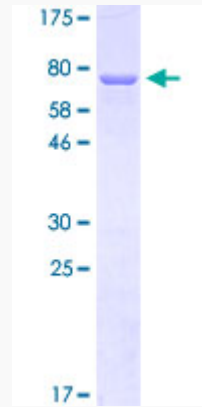
Gene Name	KRT12 keratin 12 [Homo sapiens]
Official Symbol	KRT12
Synonyms	KRT12; keratin 12; keratin, type I cytoskeletal 12; K12; Meesmann corneal dystrophy; CK-12; keratin-12; cytokeratin-12;
Gene ID	3859
mRNA Refseq	NM_000223
Protein Refseq	NP_000214
MIM	601687
UniProt ID	Q99456

Tel: 1-631-559-9269 1-516-512-3133

Email: info@creative-biomart.com Fax: 1-631-938-8127

45-1 Ramsey Road, Shirley, NY 11967, USA

**Quality Control
Testing**



12.5% SDS-PAGE Stained with Coomassie Blue

 Tel: 1-631-559-9269 1-516-512-3133

 Email: info@creative-biomart.com  Fax: 1-631-938-8127

 45-1 Ramsey Road, Shirley, NY 11967, USA