

Recombinant Human KRT13 Protein, His&SUMO-tagged

Cat. No. KRT13-1074H Lot. No. (See product label)

SPECIFICATION

Product Overview	Recombinant Human KRT13 Protein (Glu104-Ala403) with His&SUMO tag was expressed in E. coli.
Species	Human
Source	E.coli
ProteinLength	Glu104-Ala403
Description	<p>The protein encoded by this gene is a member of the keratin gene family. The keratins are intermediate filament proteins responsible for the structural integrity of epithelial cells and are subdivided into cytokeratins and hair keratins. Most of the type I cytokeratins consist of acidic proteins which are arranged in pairs of heterotypic keratin chains. This type I cytokeratin is paired with keratin 4 and expressed in the suprabasal layers of non-cornified stratified epithelia. Mutations in this gene and keratin 4 have been associated with the autosomal dominant disorder White Sponge Nevus. The type I cytokeratins are clustered in a region of chromosome 17q21.2. Alternative splicing of this gene results in multiple transcript variants; however, not all variants have been described.</p>
Form	Freeze-dried powder
Molecular Mass	Predicted Molecular Mass: 48.5 kDa; Accurate Molecular Mass: 55 kDa
Purity	> 90%

 Tel: 1-631-559-9269 1-516-512-3133

 Email: info@creative-biomart.com  Fax: 1-631-938-8127

 45-1 Ramsey Road, Shirley, NY 11967, USA

Applications	Positive Control; Immunogen; SDS-PAGE; WB.
Stability	The thermal stability is described by the loss rate. The loss rate was determined by accelerated thermal degradation test, that is, incubate the protein at 37 centigrade for 48h, and no obvious degradation and precipitation were observed. The loss rate is less than 5% within the expiration date under appropriate storage condition.
Storage	Avoid repeated freeze/thaw cycles. Store at 2-8 centigrade for one month. Aliquot and store at -80 centigrade for 12 months.
Storage Buffer	20mM Tris, 150mM NaCl, pH8.0, containing 1mM EDTA, 1mM DTT, 0.01% SKL, 5% Trehalose and Proclin300.
Reconstitution	Reconstitute in 10mM PBS (pH7.4) to a concentration of 0.1-1.0 mg/mL. Do not vortex.

GENE INFORMATION

Gene Name	KRT13 keratin 13 [Homo sapiens (human)]
Official Symbol	KRT13
Synonyms	KRT13; keratin 13; keratin, type I cytoskeletal 13; CK13; cytokeratin 13; K13; keratin; type I cytoskeletal 13; MGC3781; MGC161462; CK-13; keratin-13; cytokeratin-13;
Gene ID	3860
mRNA Refseq	NM_002274
Protein Refseq	NP_002265

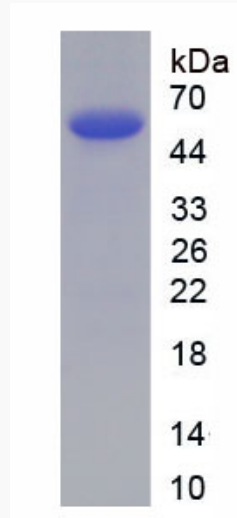
 Tel: 1-631-559-9269 1-516-512-3133

 Email: info@creative-biomart.com  Fax: 1-631-938-8127

 45-1 Ramsey Road, Shirley, NY 11967, USA

MIM 148065

UniProt ID P13646



Tel: 1-631-559-9269 1-516-512-3133

Email: info@creative-biomart.com Fax: 1-631-938-8127

45-1 Ramsey Road, Shirley, NY 11967, USA